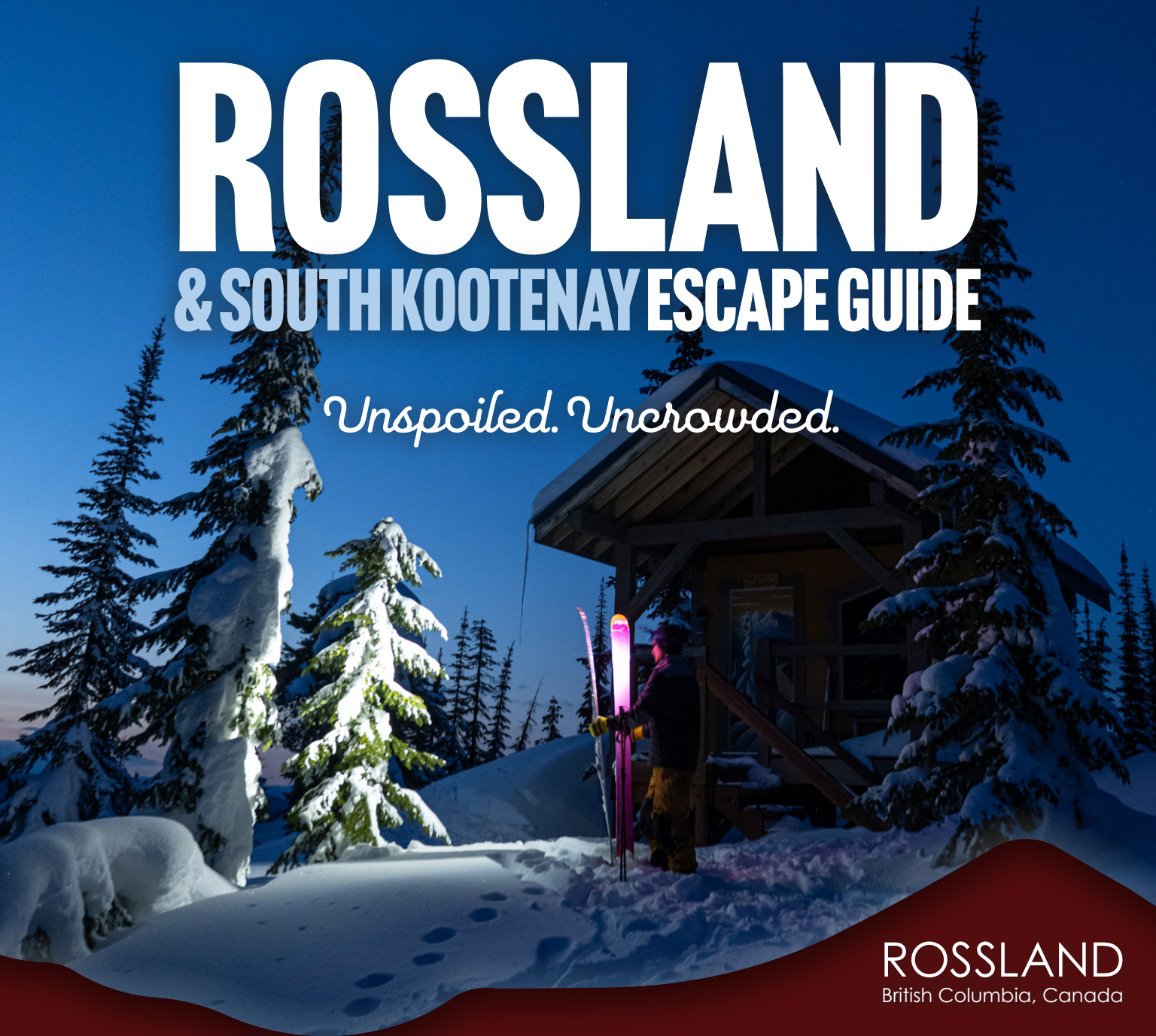




ROSSLAND

& SOUTH KOOTENAY ESCAPE GUIDE

Unspoiled. Uncrowded.



ROSSLAND
British Columbia, Canada

Welcome to Rossland!

IN THE BEGINNING

THIS LITTLE SPOT, WAY UP in the Monashee Mountains of the Columbia Range, was always destined for greatness. Millions of years ago, it was already hot property – literally – the geology of this area includes Jurassic-aged volcanic rock. For those in the know, that meant treasure!

Yes, it was **Red Mountain's** shimmering ore, a virtual Eldorado near the international boundary 'twixt Canada and the U.S.A that lit the beacon of the Kootenays. The glittering treasure, the jewel in the hat, the bacon in the fry pan drew gold-seekers and fortune hunters from around the world. **The rush was on!** After gold was discovered, the early 1890s saw thousands of speculators, hucksters and seasoned miners scrambling over mountain passes, one another and their own beloved mothers to stake a claim in the as-yet-unnamed burg. >>



Foreground photo: Founder Ross Thompson, c. 1890s
Background photo: Horse race on Columbia Avenue, 1898



Rossville?

SAVVY, SHREWD AND WILY, AN early arrival to the scene was one **Ross Thompson**. While his peers busied themselves with pick and axe, Thompson asked himself how best to pick the prospect for his own eventual fortune. No townsite had thus far been claimed, and Ross Thompson was just the man to do it, to deed it, to put his stamp and name on it. Sadly, "Thompson" was already taken, so Ross did the next best thing and assigned his given name to this nascent city in the wilderness. The land of Ross was born – Rossland and its mines soon-to-be heralded as boomtown money makers throughout the western world.

Storefronts, many still in use today, began to pop up along **Columbia Avenue** where they were stocked with beer, whiskey, cigars and more whiskey, beer and cigars, along with less important items like clothing and food. Several local breweries and over 40 saloons, pubs and parlour hotels kept the population civil.

Initially the almost-exclusive domain of grizzled miners, the **Dewdney Trail** and sternwheeler landings on the **Columbia River** began to facilitate the arrival of families, businesses and cultural refinement.

A wagon road and rail lines continued to feed goods into town while simultaneously moving high-grade ore down the hill for smelting. **Trail Landing**, eventually shortened to just "Trail," became home to a large smelting operation that has continued its operations for over a hundred years. And while the gold extraction eventually slowed, Rossland persevered and found new lines to mine in its mountains – the white gold – our dry, light powder snow.

Yes, amidst all the hubbub and bottomless romance of candlelit twelve-hour shifts underground, the early miners still had the energy to partake in skiing! **Olaus Jeldness**, whose statue stands guard at the corner of Columbia and Washington streets, is largely credited with introducing ski jumping and winter sport to Rossland. His immortal, bronzed vantage point grants him saintly status over area skiers and mountain-bound hitchhikers alike.

A safe, friendly place to hang your hat or dry your boots, Rossland continues to be a terrific community to visit or to settle in, a destination for dreams and dreamers to pull up a chair and stay a while.





Today Rossland still has many of its original buildings, which contribute to the charm of its downtown.



Pick up copies of the Heritage Walking Tour brochure at the Rossland Museum & Discovery Centre and Gold Rush Bookstore.



NEED INFORMATION?

THE ROSSLAND MUSEUM IS HOME to Rossland's official Visitor Centre! The knowledgeable staff can answer all of your questions and more. Drop in to pick up free brochures and maps or learn about local hotels, restaurants, and activities. You may come away with a few great insider tips to make your stay even more enjoyable!

Public Parking (RV Parking),
Public Washrooms and free Wi-Fi.



Explore Rossland's mining history and more at the Rossland Museum & Discovery Center.

HISTORY COMES ALIVE

WANT TO LEARN MORE about Ross Thompson, Olaus Jeldness, and other influential characters from Rossland's gold-mining heyday? Check out the **Rossland Museum & Discovery Centre!** A recent facelift has the museum looking half its age and attracting visitors from near and far.

A must-see for its in-house theatre, fluorescent minerals, and photographic records, the museum is home to gold-rush era antiques and priceless archival pieces. Informed staff and volunteers are on hand to answer questions and to lead you through interactive displays that illustrate the history of mining, power generation, skiing and life in our little mountain town and its surrounding area.

Curated displays include geological and exploration history in addition to that of community-minded groups that have helped

Rossland's heritage surrounds us, in its buildings and the landscape.

shape Rossland into what it is today. The **gift shop** purveys a selection of interesting souvenirs and books that tell the various stories of Rossland's history. Located at the junction of Highways 3B and 22, the museum is open year round. Visit rosslandmuseum.ca for additional information.

History is visible within town, too, with heritage placards and signage found on a number of the gold-rush era buildings that survived Rossland's three disastrous fires in 1902, 1927 and 1929. B.C.'s foremost institutional architect, **Francis Rattenbury**, designed the original Bank of Montreal building at the corner

of Columbia and Washington, this in addition to the British Columbia Parliament Buildings and the landmark Empress Hotel in Victoria. The handsome J.J. Honeyman-designed Rossland Courthouse is designated a National Historic site of Canada.

The **Miners Hall** is a worthy visit, too, with ongoing arts and culture programming breathing life into the volunteer-built and managed building. Dating back to 1898, this national historic site is said to play host to a handful of phantoms, though visitors are more likely to encounter musical theatre performers during the summer **Gold Fever Follies** run.

Set during the boom years of Rossland's heyday, the Follies shows are adept at capturing a farcical, musical take on events both true and wholly fictitious. As with all things purporting to be historical, it is the audience that will have to determine what's best to believe.



Beyond Built Heritage

Explore Rossland to see our historic homes and buildings! Built circa 1898, these heritage structures awaken us to our Canadian culture. Vestiges of our pioneer roots can be visited in our cemeteries and charming downtown. heritagerossland.com





Rossland Heritage Commission

ROSSLAND HERITAGE COMMISSION  



Rossland Museum & Discovery Centre

Discover the history of Rossland from mining to skiing and beyond! Located at the site of the historic gold mining district, there's something for everyone to explore. Interactive Displays | Property Tours | Gold Panning Gift Shop | Free WiFi | RV Parking | Picnic Grounds Home to Rossland's Visitor Centre. Open Year-Round.

rosslandmuseum.ca, info@rosslandmuseum.ca
1100 Hwy 3B, Junction of Hwys 3B and 22
250.362.7722, 888.448.7444  



WORLD-CLASS TRAILS

A LITTLE MORE than twenty five years ago, the first **mountain bikers** in Rossland began to repurpose old mining trails and rights of way to suit their needs. Where cast-iron fry pans had dangled from early prospectors' saddlebags, this new brand of adventurer rode light and fast, with tin canteens exchanged for hydration packs and mining claims for trail maps. Using the old roads and paths that led to dormant mines, these pioneers carved out spur-lines and ventricles through the arteries of the Rossland front and backcountry.

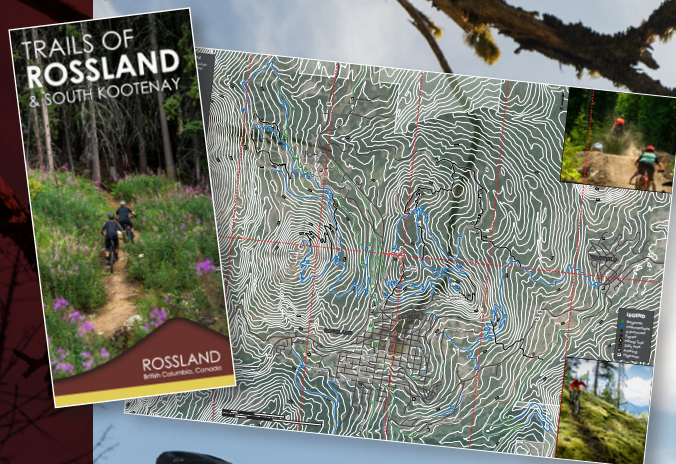
Today, the trail-building torch has been largely taken up by the **Kootenay Columbia Trail Society** (KCTS), enthusiasts and self-described "regular folk" who have a passion for the mountains, their town, and the trails that connect them. Responsible for the development and upkeep of over **150km** of purpose-built, professionally maintained single-track, this dynamic organization and the volunteers that support it are credited with making the world-famous **Seven Summits** trail. This **IMBA Epic** trail is definite bucket-

The IMBA Epic 35-km Seven Summits Trail is the jewel in Rossland's mountain biking crown.

list material — a 35-kilometre point-to-point that's well-maintained, challenging and technical.

Best described as satisfying the intermediate to advanced set, Rossland's mountain-biking scene is a perfect seasonal counterpoint to winter's downhill and cross-country pursuits. From pump 'n' swoop on **Technogrind** to the radical rock slabs of **Sudden Exposure**, we've got the spectrum of fun on a bike covered.

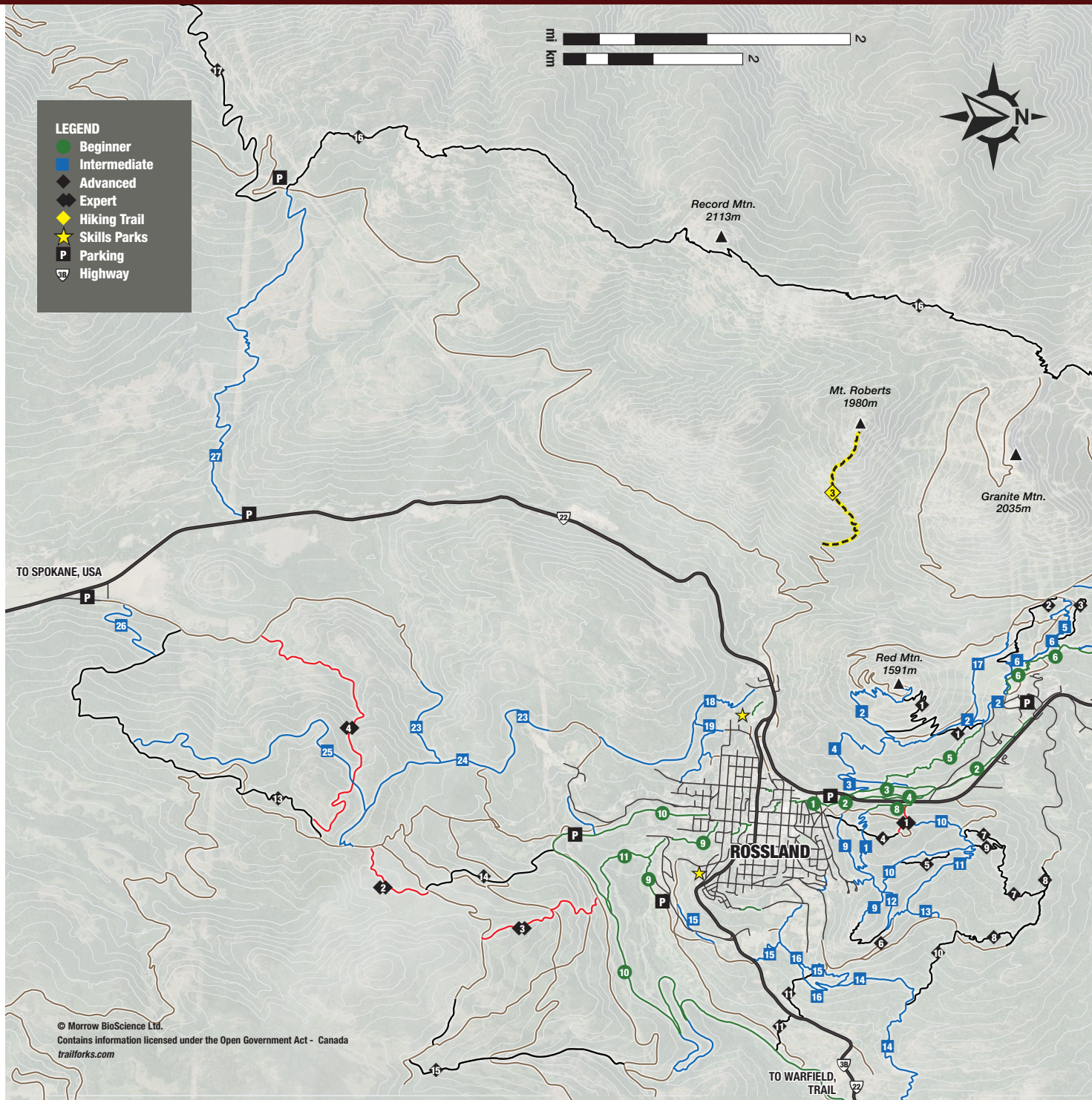
For a day ride that's a fair bit flatter than the Seven Summits, the **Columbia and Western Rail Trail** (CWRT) is a world-class ride on an abandoned Canadian Pacific Railway line. The CWRT covers 162 kilometres from Castlegar to Midway, B.C. This well-maintained trail will take you over trestles, past the Arrow Lakes and through hand-dug rock tunnels, giving you a taste of our history. The CWRT is part of the **Trans Canada Trail**, the world's longest network of trails.



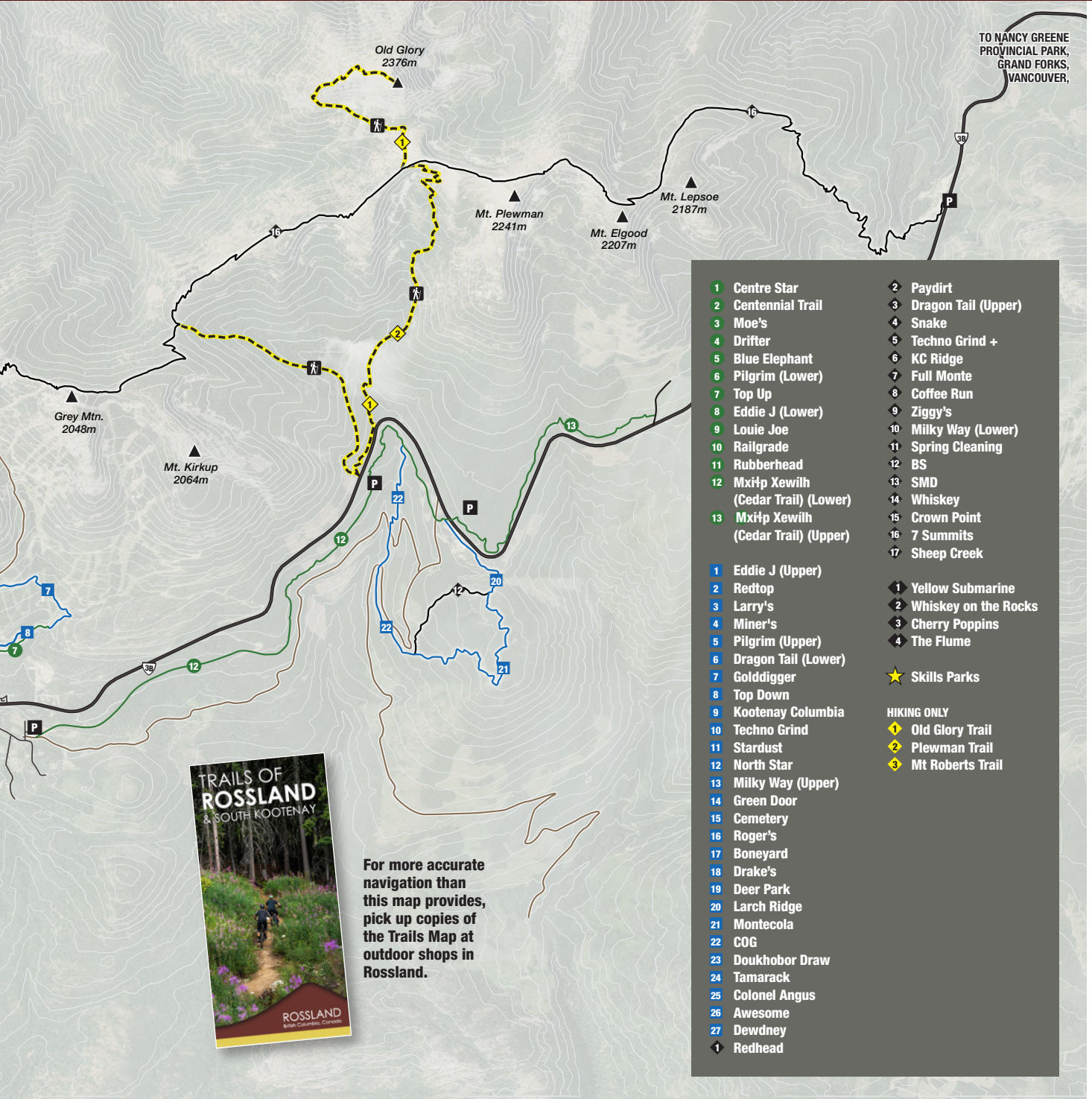
Pick up copies of the trails Map at outdoor shops in Rossland.



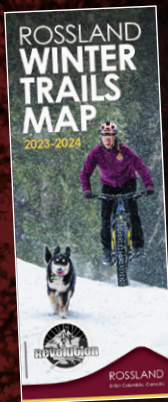




TRAILS OF THE ROSSLAND RANGE



Fat Biking



Pick up copies of the Winter Trails Map at outdoor shops in Rossland.

FOUR-SEASON FAT-TIRE FUN

BRANDED THE BULKIER COUSIN OF SUMMER and shoulder season mountain biking, **fat biking** has solidified its wide-load stance in the Rossland biking scene.

True, these wide-tired behemoths can be pedaled four seasons of the year, but they really strut their stuff in the winter months. Just ask the growing number of committed devotees in their frosted goatees — thumbs up and high fives thrown out as they navigate a handful of **packed and groomed** fat-bike-friendly paths. Chubby rubber tires are welcome on several Rossland trails.

Powered by single-track, machine-groomed technology and single-minded enthusiasts that can't shelve their bikes for the winter, the volunteer corps maintain select routes, with the fat-bikes' cult-following maturing into another niche sport embraced on the Rossland sports-scape.

Rentals and gear are available at Revolution Cycles and Get Lost Adventure Centre along with lots of advice and info on what trails are good to ride at the moment. Check out the fat-bike grooming report at fatbikerosslnd.tumblr.com.



Kootenay Mountain Biking

Mountain Bike Lessons, Guiding, Shuttles. Expert coaches since 2007.

- Daily shuttles 7 Summits & local trails
- Adult custom trips and tours
- Youth summer camps
- Private lessons

kootenaymountainbiking.com
info@kootenaygateway.com
250.362.0080  



kootenay mountain biking

Revolution Cycles

Revolution is proud to have been Rossland's bike store for 20 years. We pride ourselves on offering something to everyone from the hard core to the "just getting started." From rentals to service to everything in between.

<http://www.revolutioncycles.ca>
1990 Columbia Ave.
250.362.5688     



Kootenay Columbia Trails Society

Building community since 1996, the KCTS manages and maintains over 180 km of singletrack from Rossland to Fruitvale. Support the trails, join today!

kcts.ca



Rossland Recreation

Rossland Recreation offers a variety of recreational program opportunities for all ages throughout the year. From October to the end of February, the arena is open for public skating with rentals. Adult gym sports like basketball, volleyball, soccer and pickleball occur during the school year with drop-in options available for visitors. Additionally, there are fitness programs like spin, yoga and strength-training.

Once the ice is removed, roller-skating and roller-blading take place on the dry floor of the arena (rentals available). Public swim, located at our historical outdoor pool, runs from June to August. There are also many playgrounds, parks, ball fields, bike skills parks, programs and camps for visiting families. Visit rossland.ca/recreation for more information and current schedule.

www.rossland.ca, recreation@rossland.ca
City Hall, 2196 LeRoi Ave.
250.362.2327, 250.521.0137  





SKINNY TIRE SPINS

AS THE TERM MIGHT SUGGEST, **road biking** is a bicycling activity that takes place upon the road. No mere road surface will do though, gravel and water-barred forestry roads not up to the discerning standards of avowed road biking enthusiasts.

Smooth blacktop and unmarred pavement are their preferred habitat, thus the plumed North American variety and their Tour de France viewing cousins are equally at home on area highways and byways.

An especially popular route is **Rossland to**

The region offers hundreds of kilometres of quiet mountain roads.

Strawberry Pass via Nancy Greene Lake.

This route is favoured by triathletes and skinny dippers as the lake provides a terrific stopping point to either smash out laps, or go swimming amidst some strategically placed aquatic foliage.

Other popular options include **Waneta to Rossland, Rossland to Paterson, Trail to Fruitvale** via Columbia Gardens, and so on.

Be forewarned, though — an old-timey Penny Farthing bicycle won't be up to the task, leg strength alone unlikely to speed you up the alternately steep or moderate area climbs.

Revolution Cycles in Rossland and Gerick's in Trail offer road bike **sales and service** and carry a few for **rental** as well. Several group rides occur weekly depending on the season, with no pressure to compete at EPO augmented levels.

SELF-PROPELLED ADVENTURES

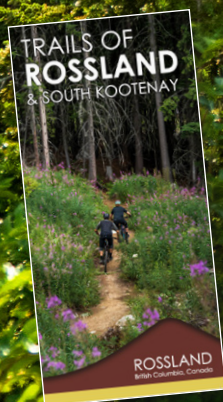
ROSSLAND'S MODERN residents have benefited immensely from the efforts of early pioneers and industry. Never mind the foresight to establish designated horse hitching and dog-parking zones, a prime example is the 150-km-plus trail network that originates in town and piggybacks on many of the first transportation routes.

Our trails snake their way through the surrounding backcountry and through much of the town. Maintaining greened corridors and pedestrian-friendly routes encourages an active community, and assists in ticking off those final pesky steps on your Fitbit.

While the wagon road and rail grade are self-explanatory, the Old Glory trail leads hikers and runners to the highest peak in the Rossland Range, where a small cadre of meteorologists monitored the weather and fire situation for

decades. Perched atop a mountain and often working around the clock in three eight-hour shifts, these brave weathermen operated in often-harrowing conditions, their primary supply line to town being the O.G. trail. Nowadays you needn't hold a degree in meteorology to retrace this well-marked route, in fact, even a loose understanding of astrology will more than equip you for the trek. Still, it's recommended you pack a map and other hiking essentials and not leave things to chance whatever your daily horoscope may say.

Whether your goal is to summit Plewman, to run the 50-km Seven Summits trail as in the full-sized Broken Goat race, or your aim is to head out for a peaceful forest bath in preserved stands of old-growth or saunter one of the many trails surrounding town, the Rossland area hiking and trail running options won't disappoint. Hydrate, hike, snack, rinse and repeat.



Pick up a copy of the Rossland Trail Map and Columbia & Western Trail Map at outdoor shops in Rossland



Lakes & Rivers



WATER, WATER ALL AROUND

PERCHED A KILOMETER above sea level and surprisingly porous, Rossland lacks a premier aquatic zone to tan your hide. That said, **Nancy Greene Lake** is a short drive towards Highway 3 and is a great spot to bust out your canoe, SUP, or preferred flotation device and coolers.

Good walking trails at Nancy Greene keep the hydrophobic amongst us happy, while swimming and family-friendly wading are a given. Conversely, a ten-minute drive down the hill towards Trail will bring you to the **Columbia River**. Excellent fly-fishing and a world-class standing wave at Rock Island can satiate your kayaking or inland

surfing needs, while a public boat launch in Sunningdale makes it easy to get your skiff in the water. Nearby **Champion Lakes** and the **Pend Oreille River** and whitewater adventures on the **Slocan River** are popular too. If fly fishing is your passion, the **Salmo River** to the east comes highly recommended.

**Ainsworth**
hot springs resort

**KTUNAXA**
grill
Fresh, Local, Indigenous-Inspired



spirit
water
spa



YEAR-ROUND ENJOYMENT

Experience our hot springs pools and cave, contemporary guest rooms, Spirit Water Spa and the Ktunaxa Grill. Find out more at ainsworthhotsprings.com. Proudly owned by **Yaqaan Nukiy**

CHILL VIBES, HOT SHOTS

SAY GOODBYE TO STUFFY GOLF courses and hello to a relaxed, welcoming atmosphere. At Redstone Resort, it's all about enjoying the game with friends old and new, whether you're a seasoned golfer or swinging for the first time.

The minute you step into the heritage clubhouse, **the epitome of cool vibes and good times**, you know this place is different. With mouthwatering food, refreshing drinks, and a **sprawling patio**, one might wonder if you are here for the golf or the social life.

Ladies Night, Men's League, NGL events and (almost) weekly tournaments give you plenty of ways to meet your new summer family. You can even bring Fido on the course after 2 p.m.

Redstone is known for packaging play with an epic stay. Bring your dream team, or group of hackers, and make Rossland your basecamp for a golf getaway. If you're looking for variety, you can play five different golf courses all within a half-hour drive.

Fore...

..est!

Redstone Resort
is an 18-hole,
Les Furber
designed course.



VOYKIN



VOYKIN



VOYKIN



HEATH

Disc Golf

TOSS A ROUND

BEEN PRACTICING YOUR THROWS AT THE LOCAL junkyard? Ready to graduate from hubcaps and discarded saw blades to high-tech aircraft-grade plastics? Or maybe you've been kicked off the local track and field team for refusing to bend to their stifling discus rules? **Disc golf** may be for you.

A natural progression of Frisbee-ing and nothingness, this deeply existential pastime finds an elite few navigating courses eked out of wilderness, their multiple specialty discs sent spinning with laser-beam-like precision towards their targets, baskets or chimes strategically placed to truly test the accuracy and mettle of the genuine disc-golf sniper. Or ninja. Or whatever.

A terrific hoof through the woods, the **Thin Air disc golf course** is the product of innumerable volunteer hours spent planning and building an eighteen-basket course on and around the **Black Jack cross-country ski area**. With views of Red Mountain from much of the course, the par-three baskets demand concentration and a keen eye to prevent oneself from spending much of the round in the underbrush.

PRO TIP: Pick discs that clash with the prevailing tones of the season (neon greens in the Fall, orange and yellow in the Spring).

PHOTOGRAPHY: ASHLEY VOYKIN



BIRDIE, EAGLE, ALBATROSS, *DINOSAUR...*

GOLF, *REDEFINED*, AT REDSTONE RESORT

AT REDSTONE, WE BELIEVE GOLF IS FOR EVERYONE — CHECK YOUR EGO AT THE CLUBHOUSE DOOR. WHETHER YOU'RE A PRO OR A BEGINNER, OUR COURSE IS YOUR CANVAS FOR SWINGING, LAUGHING, AND CREATING MEMORIES (OR YOUR OWN GOLF TERMINOLOGY). DISCOVER WHY REDSTONE RESORT IS THE ULTIMATE DESTINATION FOR GOLFERS WHO REFUSE TO TAKE THEMSELVES TOO SERIOUSLY.


RED/STONE
RESORT
REDSTONERESORT.COM

TAKE CARE OF YOURSELF

FOLLOWING A BIG OLD NIGHT ON the town, you may be in need of some scheduled downtime, or at least some ample self-care. Breathe, relax and ease your way into one of our spas. Whether cosmetic, preventative, or giving yourself a well-deserved treat, Rossland is well

represented in the field of health and wellness.

Consider dropping in for a **yoga** class Engage your core in **pilates** or book a **massage therapy** session. Alternatively, sign up for some early morning **butt blasting class** at the local gym.

Naturopathic services are available in town at Natural Path, as are a **full-service pharmacy**

and a **natural health** products store.

If you're looking to bounce back from a nagging injury, Infinity **Physiotherapy** has a terrific team, and if you need hands-on immediate medical attention, the Kootenay Boundary Regional **Hospital** is just down the hill in Trail.

Kootenay Counselling


We are proud to provide Gottman-based couples, child and youth, family, and adult counselling services to Rossland. Don't feel heard by your partner? Struggling with the kids? Worried about your anxiety? We can help!

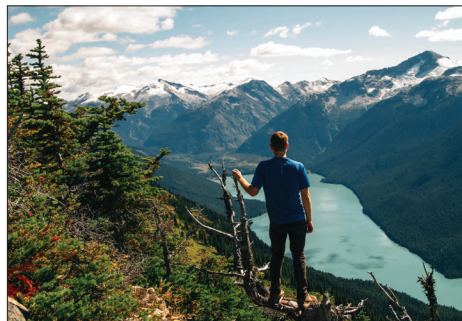
kootenaycounselling.ca
2038 Washington St.
250.362.5035 



The Natural Path Clinic

Our Naturopathic Doctors have extensive experience helping women of all ages understand and balance their hormones and digestion (thousands to date!) using natural treatments and bioidentical hormones when indicated.

thenaturalpath.ca
2038 Washington St.
250.362.5035 



Infinity Physio Centre

Bring us all your aches and pains! Our experienced team of physiotherapists, massage therapists and chiropractors are well-equipped to handle any of your mountain related mishaps, and get you back out doing what you love! Our services include sports injury rehab, concussion and vestibular rehab, IMS, bracing and more...

infinityphysio.ca
info@infinityphysio.ca
1961 Georgia St.
250.362.7333  



Relocation

HOME FOR A REST

IF YOU'RE TIRED OF THE BIG-CITY hustle and dehumanizing anonymity of urban life, or if you just want to shift gears and change your pace to Kootenay time, Rossland has an array of **real estate agencies** and **realtors** along with an active Trail and District Chamber of Commerce membership.

Whether you're looking for an opportunity to invest, information on relocating your family or business, or area information such as schools and hospital service, the **City of Rossland** and

Rossland's population of 4200 is just the right size for offering great amenities, and staying friendly and safe.

other agencies within city limits and nearby are terrific resources.

Or, talk to one of many employees of the tech firms, or one of the nomadic

entrepreneurs that have decided to make Rossland their home. With fibre in the ground and heads in the clouds, Rossland is an idyllic and ideal locale to turn your remote-working dreams into a reality.

Speaking to locals, too, comes highly recommended! Rosslanders love to dish the goods on what makes their home so darn great. Many will happily take time out of their day to tell it like it is, some even on a powder day. Or at least on the chairlift.

Marie-Claude Germain / Fair Realty Rossland

Helping Buyers and Sellers since 1992. Serving Rossland and the Kootenays. Where knowledge and expertise Counts!

mcgermainrealty.ca
mcgermain@shaw.ca
Let me help you find the perfect Rossland Home!
Cell: 250.512.1153



RED Mountain Homes

RED Mountain Homes is a limited collection of homes for those who share our love of mountain living — every trail, every turn, every sunrise and snowfall. Stop by our Discovery Center at the base of RED, minutes from Rossland's historic downtown.

REDMountainHomes.ca
info@REDMountainHomes.ca
778.457.5003 [f](#) [i](#) [o](#) [t](#)



RED MOUNTAIN HOMES



Mountain Town Properties

Mountain Town Properties is a boutique brokerage offering real estate services to buyers, sellers and rental property owners. We're experts at assisting non-Canadian residents purchase and sell vacation rental properties at RED Mountain Resort and Rossland. We know the real estate market, we know rentals — give us a call!

MountainTownProperties.ca
info@mountaintownproperties.ca
2020 Washington St.
250.368.7166 [f](#) [i](#) [o](#) [t](#)





MORE THAN JUST REAL ESTATE.



RED MOUNTAIN HOMES

Over the coming years, RED Mountain Homes will invite lovers of the mountain life home to the mountain—to a limited collection of condominium, townhome and single-family neighbourhoods at and around the base of RED.

RED Mountain Homes was created by people with a deep commitment to the culture, roots and spirit of RED and Rossland, for enthusiasts and adventurers like you. Always, RED Mountain Homes stays true to the culture, roots and spirit of RED and Rossland—to the values we live every day. Welcome to Red Mountain Homes. Your mountain. Your home.

**Visit our Discovery Centre at the base of RED,
steps from the RED Chair.**



Register to learn more about
RED Mountain Homes by scanning
the QR code or calling (778) 457-5003



LEGENDARY MOUNTAINS, LEGENDARY SNOW

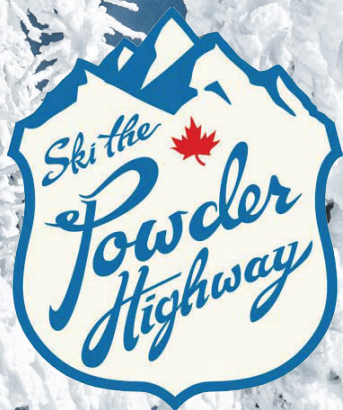


VOYKIN



FLETT





DO YOU LIKE to partake of the skiing? Or perhaps you prefer to do the snow-surf? RED Mountain Resort, like much of modern-day Rossland, has evolved in relation to its roots. Where ore buckets and tramlines once transported the gold-laden rock to rail cars below, today minivans and SUVs stuffed with gold-medal-eyed kids, grownups, dirt bags and octogenarians make their way to the chairlifts at RED.

Why? Because they know what time it is – the clock strikes awesome all over RED Mountain. The New York Times voted RED their **#8 Best Place in the World to Visit** and USA Today listed us as one of the **10 Best Ski Towns in 2018**. Sure, you can spend sleepless nights crunching numbers on mountain statistics, annual snowfall, skiable acres, blah blah blah, but that kind of algorithm crunching is for screen-tanned nerds!

Red, Granite, Grey and Kirkup mountains are all impressive in their own rights, but taken in sum and dosed with a heaping helping of pow, and a mere sprinkling of people, makes the whole experience downright, down-home spiritual. You will be glad you came here, heart on your sleeve, banjo on your knee. Whatever you're into for downhill sliding, our local resort has got you covered.

And RED recently got even radder. The long-time favourite of powder-hounds and fall-line aficionados continues to climb through the big leagues with yet another addition of terrain for its guests to recreate on. The **Topping Chair expansion** adds to RED Mountain's stature, putting it in the Top 10, size-wise, for North America, with total skiable acreage at 3,850.

High performance rentals? You bet. **Terrain park?** There is one, but it plays second fiddle to natural terrain. Take a look around! There are two fully serviced **day lodges** (Base and Paradise), and RED has the best **après ski bar** in Western Canada. (It's called Rafter's and it's where you go to eat nachos amidst steaming base layers and sunburns).



Off-Piste

The day-use Sunspot Cabin

VOYKIN

THE BEAUTIFUL BACKCOUNTRY

DO YOU LIKE CATS? Well, Rossland is more of a dog-friendly town, but if you're talking about backcountry access you'll find yourself in good company.

Big Red Cats operates up to five **snowcats** daily through the winter. Offering intermediate, advanced, expert and "uber expert" skill-level groupings, BRC is a fixture in the area and their return clientele raves about the experience. Speaking mostly in sound effects, the average guest bounces between pow and whoosh and braaaap as seamlessly as the turns they claim to have linked on their descent down a signature BRC zone. See bigredcatskiing.com.

Or, are you more of a self-starter keen on earning your turns? Do you like the suffering up prior to the euphoric down? It's true that you can get yourself to the top of some pretty classy mountains in the **Rossland Range**, whether in the slackcountry off Red or through paths and channels less known. Locals are somewhat guarded when it comes to their



VOYKIN

stashes, but connecting with the right people and possessing the right mindset you can more than scratch the surface of what the Rossland Range has to offer. Come fully equipped, check your ego, get a map and find some friends. There's a lot of terrain out here and it's fully worthy of your respect and time.

For folks seeking a more casual experience, **day-use cabins** built and maintained by the

Friends of the Rossland Range are peppered around the local mountains and are linked together by self-set tracks, with bush skis and light-touring setups the recommended mode of conveyance.

Care to move at a slower pace?

Snowshoeing can get you where you need to be, with a maintained trail system and rental options available.

Cross-Country Skiing

Pick up
a copy of
the Nordic
Map at
outdoor
shops in
Rossland.



SUPERB SKINNY SKIING

CROSSING THE ENTIRE COUNTRY while on skis is a feat not yet accomplished. While training for this goal, though, or for the pure joy of recreating, Rossland has ample opportunities for cross-country skiers.

Classic and skate-ski aficionados will be impressed with the groomed loops and network of trails at the **Black Jack Ski Club**, and the warming huts and equipment rental services available there. It boasts 50 kilometres of professionally groomed trails, a biathlon range, doggy loops and 2.5 kms of lit trails.

There's a variety of beginner, intermediate and expert terrain, and the folks you'll meet will remind you once again that you're in a special part of the world.



HEATH



Black Jack Ski Club

One of Canada's premier cross-country facilities: 50km of classic and skate trails professionally groomed daily, including doggy and night loops, and three cozy cabins. Ski rentals and lessons. Four minutes north of Rossland.

skiblackjack.ca
info@skiblackjack.ca
310 Campbell Rd.
250.362.7164



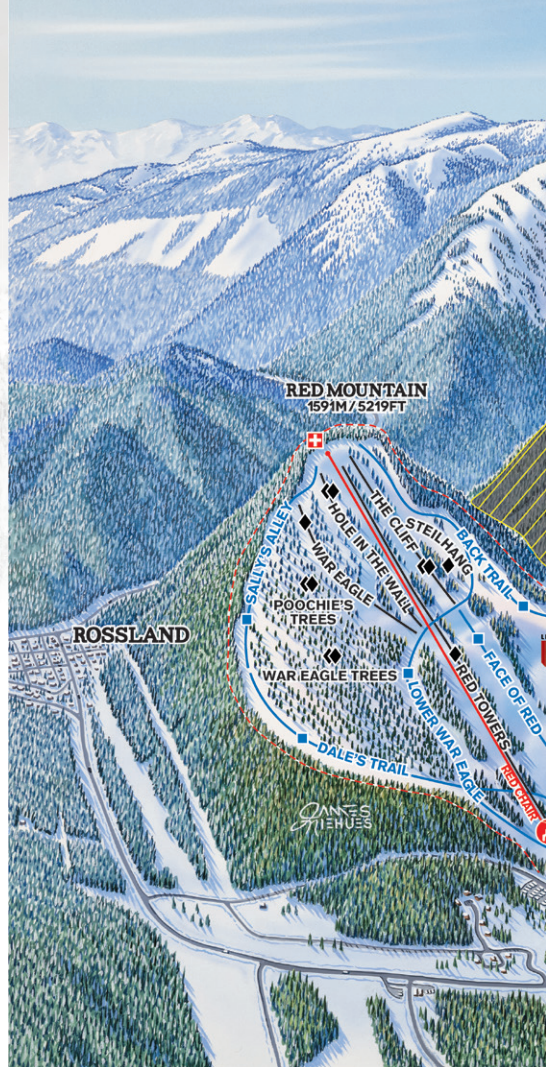
Black Jack Ski Club
ROSSLAND, BC



RED MOUNTAIN RESORT TRAIL MAP

Aside from RED's marked runs, there's endless natural tree stashes, bottomless bowls, squirrel shortcuts, powder pillows and the like. At its best, this natural terrain compares to what you might experience heli-skiing.

You see, RED is blessed with a unique topography that **allows 360-degree access off Granite Mountain and ~270-degree access off the top of Red and Grey Mountain.** Being able to descend so many different facets off the top means considerably more skiable acres per lift versus resorts with only a "front side" and/or "back side." It spreads out the skiers and riders and allows you to find your own lines, making the most of the day's snow, sun, and fun.



Vertical Drop:	890m / 2,919ft
Skiable Acres:	3,850 acres
# of Runs:	119
# of Stashes:	Countless
Number of Lifts:	8
Longest Run:	7km / 4.3mi
Beginner ●	17%
Intermediate ■	34%
Advanced ◆	23%
Expert ◆◆	26%
Avg. Snowfall:	750cm / 300in
Base Elevation:	1,185m / 3,887ft
Summit Elevation:	2,075m / 6,807ft
Avg. Winter Temp:	-4°C / 25°F

MTN STATS

NO ACCESS
BETWEEN
RED AND GRANITE
MOUNTAIN

RENAISSANCE TOWN

Rossland has a vibrant arts community of 150+ visual, performing and literary artists.

LIKE ANY GOOD MOUNTAIN town, Rossland is home to a thriving arts and culture scene. **Rossland Council for Arts and Culture** runs a roster of programming for visual arts, a performance series, and a cinema series out of the Miners Hall.

The **Rossland Light Opera Players** produces original and classic musical-theatre work with volunteer effort, and the Trail and District Arts Council operates the **Charles Bailey Theatre** with its own performance series and independent programming.

Local **galleries** and **boutique shops** feature work from landscape painters, abstract artists, ceramicists, fiber artists and woodworkers, with the weird and unusual filling gaps in between. From well-known poet laureates, aspiring Tony award winners, internationally represented artists and karaoke superstars, there are many forums in which to see or experience those talents firsthand.

The **Rossland Acoustic Music Camp** and independent **art shows** provide annual highlights, while galleries, coffee shops and coffee houses are pressed to keep up with the demand from artists and musicians alike.

Overall, not a bad problem to have!

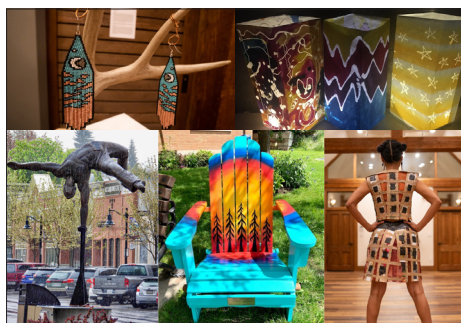
The annual Gold Fever Follies play is a rollicking musical take on true and wholly fictitious Rossland events.





'Rusty' is one of the many public art pieces installed throughout Rossland's downtown by the Rossland Arts Council.

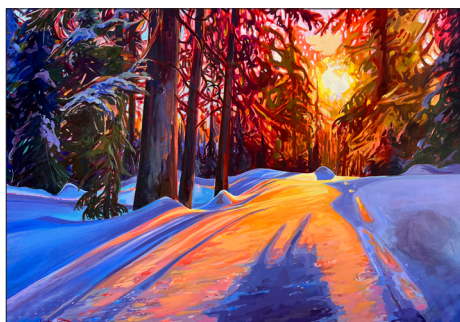
HEATH



Rossland Council for Arts and Culture

Join us for diverse arts and culture experiences through public art, performances, exhibitions, youth programs and more. Enhancing lifestyles through creative expression. Explore our annual Performance Series, Joe Hill Coffeehouse and ArtWalk. Visit our website for details!

rosslandartscouncil.com
rosslandarts@gmail.com  



Stephanie Gauvin Art Gallery

Original Paintings on Canvas, Giclee Prints, Posters and Cards. A Visit at Stephanie's gallery amidst her work and exciting colour palette is sure to enhance your mood while she creates her latest original painting in her studio tucked in the back. Stephanie's work is featured on the Canadian Mint Coins.

artiststephaniegauvin.com
painterstephaniegauvin@gmail.com
2070 Washington St.
 250.231.8159  



Gold Fever Follies

Come join the ROSSLAND GOLD FEVER FOLLIES at the historic Miners Hall for some rip-roaring, high-kicking entertainment! A family-friendly musical comedy with cancan dancing, original music and exciting characters based on Rossland's 1890s gold rush days. Runs July & August, 3pm and 7:30pm, Tues. thru Sat. (No matinee on July 1, 2025.)

For more information, contact: GoldFeverFollies87@gmail.com
 Or visit their website: goldfeverfollies.com
Rossland Miners Hall, 1765 Columbia Ave.





Events

Between the Peaks

VOYKIN



Golden City Days

HEATH



Blizzardfest

ACKERMAN



Slush Cup

KALACIS

FABULOUS FESTIVITIES



Winter Carnival



For up-to-date
events visit
Tourism
Rossland.com/
events

OLAUS JELDNESS would be proud. Way back in 1897, he initiated Canada's first **Winter Carnival** by inviting his friends to the top of Red Mountain for a now infamous "Tea Party." Ever since, Rossland has let its hair and beard down at our annual winter celebration. A mainstay in Rossland every January, the streets fill with the sounds and smells of reckless celebration. Past events featured homemade-bobsled races, an in-town rail jam, King and Queen of the Mountain (it's skiing, not a beauty pageant) and innumerable other events lead to bevies and dancing at the Ice Bar on Columbia Avenue.

Paired up with **Blizzard Fest**, the rockin' musical accompaniment to your blurry carnival memories, Winter Carnival is a do-not-miss affair. Visit rosslandwintercarnival.com for more details.

Similarly, **Golden City Days**

in September brings summer to a close, while **July 1st Canada Day** traditions like the hike up Mt. Roberts are classic activities.

The **Between The Peaks** music festival rocks the base of RED Mountain in September, with incredible music performances across two stages and a relaxed family-friendly atmosphere. **Beer Goggles** and the **RED Teeth Wine Festival** at RED Mountain Resort are crowd favourites, as is the **Rossland Mountain Film Festival** (rosslandfilmfest.wordpress.com).

The **Rattlecat Banked Slalom** (snowboard) event and freeski competitions at Red Mountain (redresort.com) draw athletes from far and wide, while the **Broken Goat** trail-running series (pacesportsfitness.com/broken-goat.html), and cross country loppets and national competitions at **Black Jack** (skiblackjack.ca) are also big attractions. For more events and info, visit tourismrossland.com/events.

NEBEKER

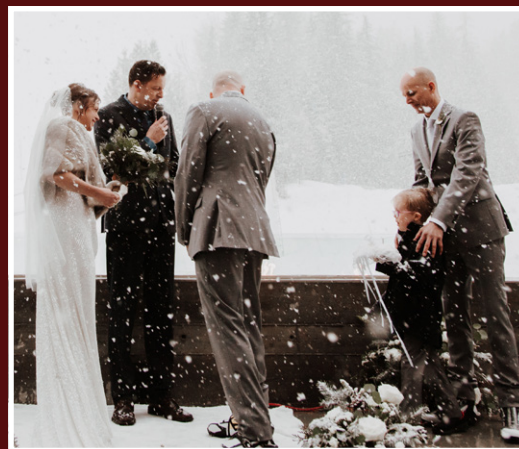
Weddings



FRESH PHOTO

LOVE ELEVATED

WHETHER YOU ENVISION snowflakes falling as you ski into your intimate wedding ceremony, dancing the night away underneath summer stars at an alpine golf course, or sharing laughter and stories at your long-table dinner surrounded by towering trees, Rossland has everything you need to make your special day something to remember. For more info, visit tourismrossland.com/weddings.



FRESH PHOTO



The Red Pair Shoestore



Rossland Outdoor



Rooted Table Collective

Boutique Shopping

FOUR FABULOUS BLOCKS

EARLY MINERS WERE somewhat restricted in how they could spend their hard-earned dollars, most treating themselves to little more than a straight razor, a bar of soap and a flashy new pair of woolen britches. Present-day Rossland, however, plays host to many excellent retailers and outfitters. Whether you're in the market for a **toque/beanie/knit cap**, a **gurgle pot**, or a vintage, hand-beaded pair of **earrings** that even your fancy city friends will be envious of, Rossland's retailers have you covered head to toe.

Big-ticket items like **skis**, **snowboards** and **bikes** populate the dreams of longtime and freshly inducted locals alike, while **base layers**, **toothpaste** and custom **tattoos** are readily available on the four blocks of Rossland's quaint but well-stocked downtown. Need a humorous t-shirt to commemorate your visit? You betcha! Matching bathrobes to sashay around your ski-in and ski-out condo and/or the bar? Heck yeah, no judgments here! Original **artwork**, locally crafted **ceramics**, **glasswork** and **designer clothing** lines are available on and off Columbia Avenue, our small-town rebuttal of Rodeo Drive or Robson Street.

Reading material, **hardware** necessities, a bottle of **bubbly**, hand-crafted **chocolate**, however you choose to spend your morning, afternoon and nights while here is really up to you!



Bombshack

Boutique Shopping



Achillea & Co.

The ingredients in the products we carry are as clean, high quality and vetted as it gets. If we wouldn't use it ourselves, you won't find it here. Shop online and enjoy a complimentary lip balm.

achilleaandco.com
2038 Washington St.
250.362.5035



Bear Country Kitchen

An amazing kitchen store for people who like to cook! Fine cookware, kitchen essentials and unique hard to find items. Quality brands include Bialetti, Bodum, Le Creuset, Wusthof, Vitamix and many more. Open 7 days. Shop in store and online.

bearcountrykitchen.ca
2070 Columbia Ave.
250.362.3355



Bombshack

Welcome to Rossland's Sweet Spot! Established in 2016, our award-winning boutique is a must-stop-shop brimming with rare candies, popping boba slushies, epic treats and trendy threads. Discover a taste of Rossland's unique charm and truly bespoke service with us! After-hours shopping by appointment. Monday-Friday 10-5.

bombshack.ca
2076 Columbia Ave.
250.231.5930



Curiosity

Men's & ladies' slow fashion boutique nestled in the heart of Rossland. Skincare • Jewellery • Accessories • Home Decor • Plants & Pots
Open Monday to Friday 10-5, Saturdays 10-4, Sundays closed

curiosityclothing.ca
1990B Columbia Ave.
250.512.1570





Fool's Gold Ice Cream

Strike it rich with fun flavours at our Sour Dough Alley take-out window, nestled behind the Gold Rush Bookstore. Enjoy our scooped ice cream amidst ample outdoor seating. We also offer gift cards, milkshakes, sundaes, and host events/parties. Open April-October. Claim your scoop today!

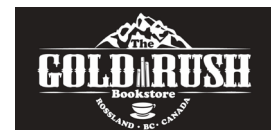
In the alley behind 2063 Washington St.
250.362.5454



Gold Rush Bookstore

Located on the heritage walking tour, our bookstore is a gold mine of treasures and gifts! Enjoy a cup of tea or French-pressed coffee while browsing our new, bargain, and used books. Explore our full inventory online, including shareable audiobooks! Discover a bounty of board games, puzzles, journals, and greeting cards.

goldrushbookstore.ca
2063 Washington St.
250.362.5454



Rooted Table Collective

Venture down to the East end of Columbia Avenue and you'll find Rooted Table Collective, Rossland's 100% British Columbia local specialty farm, food and goods shop! At Rooted it is our mission to be the bridge between you and the local food on your plate, and to make it easy to support small businesses (the backbone of our thriving province!). Offering a carefully curated lineup of B.C. grown, produced and crafted goods, we do the hard work so you can rest easy knowing your purchases make a difference.

From nutritious seasonal vegetables and fruits, to specialty meats from small-scale farms, to eggs, specialty cheeses and shelves stocked with pantry goods; from natural cleaning products, to candles, quality wellness products and self-care items, we have new products coming in regularly and you'll never know what you might find!

rootedtablecollective.com
eatlocal@rootedtablecollective.com
2140 Columbia Avenue
250.231.1828



Ferraro Foods

Quality and selection! Huge selection of groceries, many deli items made in-store daily, over 1,500 international foods, meats cut in-store by our butchers, great selection of seafood and cheeses, fresh, local and organic produce, fresh baked goods and more! Open 7 days.

ferrarofoods.ca

2029 Columbia Ave., Rossland

850 Farwell St., Downtown Trail

250.362.5206 





Laundry Dog Laundromat

Clean Fresh Clothes Fast! Bright and clean, B.C.'s most beautiful laundromat has new front loading washers and energy efficient dryers. Change machine and laundry supplies on site. Free WiFi. Find us on Facebook and Google.

laundrydoglaundromat@telus.net

1960 B Columbia Ave.

250.362.0060  



The Red Pair Shoestore

Mountain living requires good footwear.
Come see us and we will get you moving in comfort!

theredpair.com

2104 Columbia Ave, Unit A

778.457.0015  



Jeffrey's Cannabis Shop

Our locally owned and operated stores have been in the cannabis business for over 10 years. We leverage our experience, knowledge, and ability to transfer between stores to bring you the largest, freshest, and most curated menu in the West Kootenay!

jeffreyscannabis.ca

2123 Columbia Ave.

250.362.9001






Mountain Nugget

Chocolate – Ice Cream – Pastry. Hand-rolled truffles, single-batch chocolate bars, and an assortment of chocolate confections, pies and French pastries. Our skilled ice cream makers create every flavour with obsessive attention to detail. All of our products are created on-site, and in small batches, to ensure maximum freshness and quality.

mountainnugget.com

1938 Columbia Ave.

250.362.3338   



ROSSLAND OUTDOOR



PHOTOS BY RAW AGAVE

**GEAR UP FOR YOUR NEXT ADVENTURE WITH
ROSSLAND OUTDOOR!**

Your one-stop destination for all things skiing, hiking, and biking! Whether you're shredding powder on the slopes, conquering rugged trails, or cruising down scenic paths, we've got you covered.

2040 Columbia Ave, Rossland BC. - (778) 457-1234 - rosslandoutdoor@gmail.com



Gabriellas



Alpine Grind Coffee House & Eatery



Donnie's Bistro

Wining & Dining

URBAN FARE

AFTER BREAKFAST, BRUNCH and lunch comes dinner, and in Rossland that means going out to eat. Heck, we like going out to eat for breakfast, brunch and lunch as well. Not because we don't enjoy dining in, or that constant snacking means we lack the basic ingredients to put something together, it's because of the amazing array of restaurants available here in this little town that can compete with the best of a big city.

We don't have a pair of golden arches, we're more about balancing fats and starches, and the substantial menu selection across town reflects this approach to happy and healthy eating. Authentic **Italian**, tasty **pub** and **casual** dining, **locally roasted espresso**, **sushi**, **Chinese** and sit-down, take out, stand up, **haute cuisine** and oatmeal cookies, there's a bevy of options and potion-like bevies for whatever your tastes or dietary restrictions may require or desire. Vegan and vegetarian friendly dishes abound, as are gluten-free menu items. From the locally sourced food and craft cocktails of the Velvet, to spray cheese and bologna shared amongst friends, there's something for everyone in town.

And after dinner? Rossland is home to a lively nightlife scene that is more about being there than just being seen. **Live music**, **open-mic nights**, **comedy** and **concerts** pull tired skiers, cyclists and self-described introverts from the clutches of their sectional sofas out into the limelight. The Flying Steamshovel, Rafters at Red, The Eagles and the Legion all host bands and DJs, professional and amateur, with lineups and programming changing through the seasons.



The Velvet at the Josie

Wining & Dining



The Flying
Steamshovel



Alpine Grind Coffee House & Eatery

Locally roasted Oso Negro coffee and espresso drinks, fresh baking, salads, soups, bagel sandwiches including our famous frittata breakfast bagel, pizza nights and more. Enjoy our lovely seasonal back deck in the trees! Order online at grindtogo.com

alpinegrindcoffee.com
2104 Columbia Ave.
250.362.2280



Donnie's Bistro

Great locals' restaurant with fabulous food, great prices with the best wine list in the Kootenays. Donnie's Bistro has a welcoming and cozy atmosphere, kid friendly and a shaded outdoor patio in the summer. Whether it is a weekend brunch or dinner with family and friends, Donnie's has something for everyone.

info@donniesbistro.ca
1-4430 Red Mountain Rd., at Red Mountain
778.457.1736



The Velvet Restaurant & Lounge

After an exhilarating day on the mountain, The Velvet Restaurant & Lounge offers an equally soul-enriching dining experience at the base of RED Mountain Resort inside The Josie Hotel. The Velvet serves a regionally inspired menu with craft cocktails surrounded by inspiring mountain views.

thejosie.com
4306 Red Mountain Rd.
250.362.5155

THE velvet
RESTAURANT & LOUNGE

Gabriella's Restaurants Ltd.

In the Prestige Hotel, downtown Rossland:

- Breakfast Caffe, 7am • Restaurant, 4pm
- Adult-Only Lounge, 4pm

Book in advance to enjoy the famous TRIP AROUND ITALY – a six-course dinner vacation.

gabriellaspasta.com

info@gabriellaspasta.com

1919 Columbia Ave.

250.362.SKIS (7547)






Rosland Beer Company

Come check out the local brewery.

It's a place to talk about the day and sit back and enjoy every sip.

rosslandbeer.com

1990F Columbia Ave.

250.362.2122   



Redstone

Serving up classic pub food and fine dining fare from May to October. Enjoy dining in our historic cabin or on the expansive deck. Hosting special events, weddings, retirement parties and social clubs is Redstone's specialty.

redstoneresort.com

events@redstoneresort.com

953 Redstone Dr.





Seven Summits Coffee Company

Specialty coffee roaster with a public coffee bar.

Dedicated to quality and focused on a contemporary coffee experience. Open 7 days.

sevensummitscoffee.com

2044 Columbia Ave.

250.231.2760  



SEVEN SUMMITS
COFFEE COMPANY



The Flying Steamshovel



The Flying Steamshovel is a Rossland staple for locals and visitors alike.

Featuring 14 craft draught taps, local ciders, B.C. wine, balanced cocktails and fresh meals made from scratch.

Plan your next stay in one of our fresh, modern and recently renovated boutique rooms, right upstairs from the best gastropub around!

theflyingsteamshovel.com

2003 2nd Ave.

250.362.7323  





AN UNFORGETTABLE NIGHT UNDER THE STARS

This unreal mountain getaway is a bucket list experience at RED everyone needs to try. Our 6 overnight mid-mountain private cabins and central clubhouse with games, a full bar, food, deck seating, and outdoor firepit all provide you an overnight resort stay as remote and unique as ever. Dinner, welcome drink and snack included in the price!



WATCH THE VIDEO & LEARN MORE @ [REDRESORT.COM/CONSTELLA](https://www.redresort.com/constella)



PHOTOS: ASHLEY VOYKIN



A 2-MINUTE WALK TO THE BIGGEST PLAYGROUND AROUND.
Beds start @ just \$53 CAD/night. Private room and bath options available.

Watch the Video & Learn More
[WWW.NOWHERESPECIALHOSTEL.COM](https://www.nowherespecialhostel.com)

YOUR Dream Wedding

JUST BECAME REAL AT RED MOUNTAIN.



RED
MOUNTAIN RESORT

FOR MORE INFO AND PRICING DETAILS, VISIT US ONLINE AT [REDRESORT.COM/WEDDINGS](https://www.redresort.com/weddings)

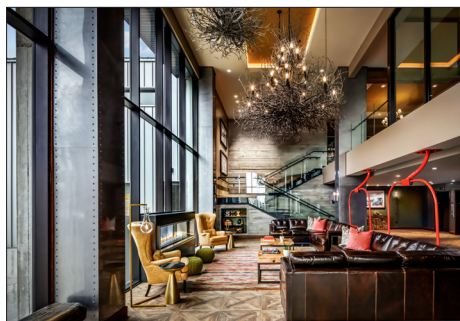
Accommodations



The Josie

© BRANDON BARRÉ PHOTOGRAPHY

WHERE YOU STAY AND PLAY



The Josie Hotel


Experience true soul exhilaration with ski-in, ski-out and bike-in, bike-out access to RED Mountain Resort. The Josie offers a luxurious home base for year-round mountain adventures, a boutique spa, cedar barrel saunas, ski valet and regionally-inspired cuisine at The Velvet Restaurant & Lounge.

thejosiehotel.com
4306 Red Mountain Rd.
 250.362.5155  



Rossland Bike Retreat

A 10-minute drive from the slopes, our family- and dog-friendly retreat offers two identical cabins. You'll find complete serenity in this mountain escape, with a view that will put a fresh perspective on any outlook.

rosslandbikeretreat.com
rosslandbikeretreat@gmail.com
1036 Hwy. 22
 778.533.2380 



Prestige Mountain Resort Rossland

Full-service downtown resort with standard and specialty suites. Relax in our hot tub or sauna, play in the arcade, or dine in the newly renovated restaurant, lounge or on the patio. Five minutes from RED Resort.

prestigehotelsandresorts.com
1919 Columbia Ave.
 250.362.7375    



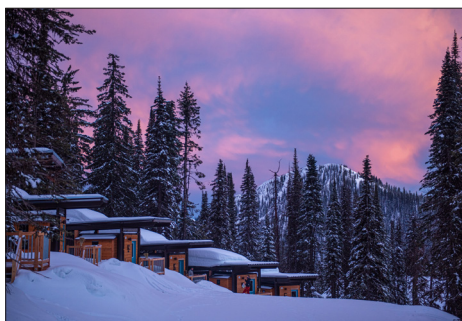
Accommodations



Angela's Place

Welcome... to Rossland's favourite place to stay, since 1980! Private suites with cooking facilities, laundry, BBQs, hot tub. Everything provided... perfect for longer stays (book early). Quiet, central location. Relax in lovely nature, by the creek. Great reviews: [Tripadvisor.ca](https://www.tripadvisor.ca) Good news: ski bus stops here! [visitedred.ca](https://www.visitedred.ca)

B&B: 1520 Spokane St.
GH: 1882 Victoria Ave.
 250.362.7790 Text: 250.777.8847 



The Constella: A Cabin Collective

Nestled on the backside RED Mountain, lies a new collection of six cabins and central clubhouse with unheard of ski-in, ski-out access. A night spent here will trick you into thinking you've been transported out of this world, until you hit the slopes for first tracks in the morning and remember that you're *simply in Paradise*.

redresort.com/constella
lodging@redresort.com
 1.877.969.SNOW | 1.250.362.5553   



The Crescent Condos

Located just steps from the RED chairlift, The Crescent is RED's brand-new 102-unit property with mixed studios, 1-bedrooms, and studio + lofts; sleeping anywhere from 4-6 guests. Each unit has a full kitchen, private gear storage, and shared building amenities including a coworking space, fitness studio, lounge, outdoor terrace/bar, and garage parking.

redreservations.com/thecrescent
lodging@redresort.com
 1.877.969.7669 or 1.250.362.5553



THE CRESCENT



The Flying Steamshovel

Only five minutes to Red Mountain Resort, The Flying Steamshovel offers an authentic experience for the mountain traveler. Stay in one of our seven freshly renovated rooms, conveniently located above the best gastropub and taphouse in town.

theflyingsteamshovel.com
2003 2nd Ave.
 250.362.7323  





Mountain Town Properties

Mountain Town Properties manages short term and long term rentals in Rossland and RED Mountain Resort for all lengths of stay. We provide full management services for property owners. Check out our website to view our rental listings, availability calendars, and to book online! Inquire for seasonal rental rates. Your stay; your way!

mountaintownrentals.ca
stay@mountaintownproperties.ca
2020 Washington St.
 250.362.5556   



Nowhere Special Hostel

The quintessential modern hostel, suitable for travelers of all ages who value community, connection, and careful curation above all. Located a mere two-minute walk from the chairlift, this hostel provides a number of floorplans including privates.

nowherespecialhostel.com
info@nowherespecialhostel.com
 1.877.969.7669, 250.362.5553  



KC Loft

The KC Loft is a modern boutique retreat for two in the heart of Rossland. The 500-square-foot, open-concept design features private entry, full kitchen, laundry, and garage parking.

kcloftrossland@gmail.com
2615A Railway St.
 250.362.7362 



Lone Star Motel


Whether you're coming for work or play, make The Lone Star Motel your budget friendly Rossland basecamp. Our rooms are clean, have everything you need, and are the best value in town.

LoneStarMotel.com
Bookings@LoneStarMotel.com
721 Hwy 22
 1.800.970.4196



Mountain Shadow Hostel

Dorm and private rooms for up to 40 guests, located in downtown Rossland. Amenities include kitchens, dining areas, cable TV/DVD, laundry, pool table, games room, deck and BBQ. "IT'S THE PLACE TO BE!"

www.mshostel.com
2125 Columbia Ave.
 250.362.7160 



Ram's Head Inn

Nestled at the base of Red Mountain, we offer a unique lodging experience full of local art and charm. We are pet-friendly and serve a fresh, daily breakfast. Come bike, ski, and explore with us.

ramsheadinn.ca
4465 Red Mountain Rd.
 250.362.9577  





Accommodations

Red Barn Lodge

Choose a room with a mountain view, or our three-bedroom, pet-friendly guesthouse. Direct access to trails. Summer outdoor pool. Mini-donkeys, goats and a flock of chickens. Creekside patio, off-street parking, snowshoes. Walking distance to downtown.

info@redbarnlodge.com

1107 Black Bear Dr.

250.231.2781  



Red Mountain Resort Lodging

From multi-bedroom condos a snowball's throw from the lift, a new modern hostel, a 4-star ski-in/ski-out hotel, and everything in between, there's a bed with your name on it. Ask about our discounted lift tickets offer!

redreservations.com

4310 Red Mountain Road

1.877.969.SNOW | 1.250.362.5553





Red Mountain Village

SKI IN to your private cabin, luxury condo or large vacation home at the base of Red Mountain Ski Area. Full kitchens, spectacular views, close to walking/cross-country ski trails.

redmountainvillage.com

1007 Mountain View. Rd.

877.362.7668, 250.362.9000  




Red Shutter Inn

Best hot tub in town! Your home base at the base of Red, for winter and summer adventure. Cozy lodge with just 6 rooms — great for a private group of 12, or singles.

www.redshutter.ca

4420 Red Mountain Rd.

250.362.2271 



Rossland Lions Community Campground

Campground amenities include clean washrooms, hot showers, gazebo with power, light and sink, full service sites, tenting sites, mountain bike trail, online booking, WiFi, sani-dump. All this and walking distance to downtown Rossland.

rosslandlionscampground.com

932 Blackbear Dr.

250.551.4751



Serene Mountain Stays

Stay in exclusive serene luxury. Fantastic mountain views. Steps to Red Mountain and local biking and hiking trails

serenemountainstays.com

serenemountainstays@gmail.com 



SureStay Hotel by Best Western Rossland Red Mtn.

Relax in true alpine style while cozied up in one of our newly renovated rooms. Free highspeed WiFi, new kitchen suites, awesome hot tub and free continental breakfast.

surestayrossland.com

1199 Hwy 3B

250.362.7364, 833.362.7364






The Wild Turkey Inn

Built in 1896, The Wild Turkey Inn is truly one-of-a-kind! With a high-end kitchen, grand dining room, and character-filled guest rooms, old-world charm abounds at this recently restored luxury inn.

thewildturkeyinn.com

info@thewildturkeyinn.com

2520 Kootenay Ave.

778.606.2019   



Discover the best of Rossland with Prestige



Our newly-renovated resort is nestled in the heart of downtown, providing convenient access to shops, restaurants, outdoor pursuits, and is only a five- minute drive to spectacular skiing at **RED Mountain**.

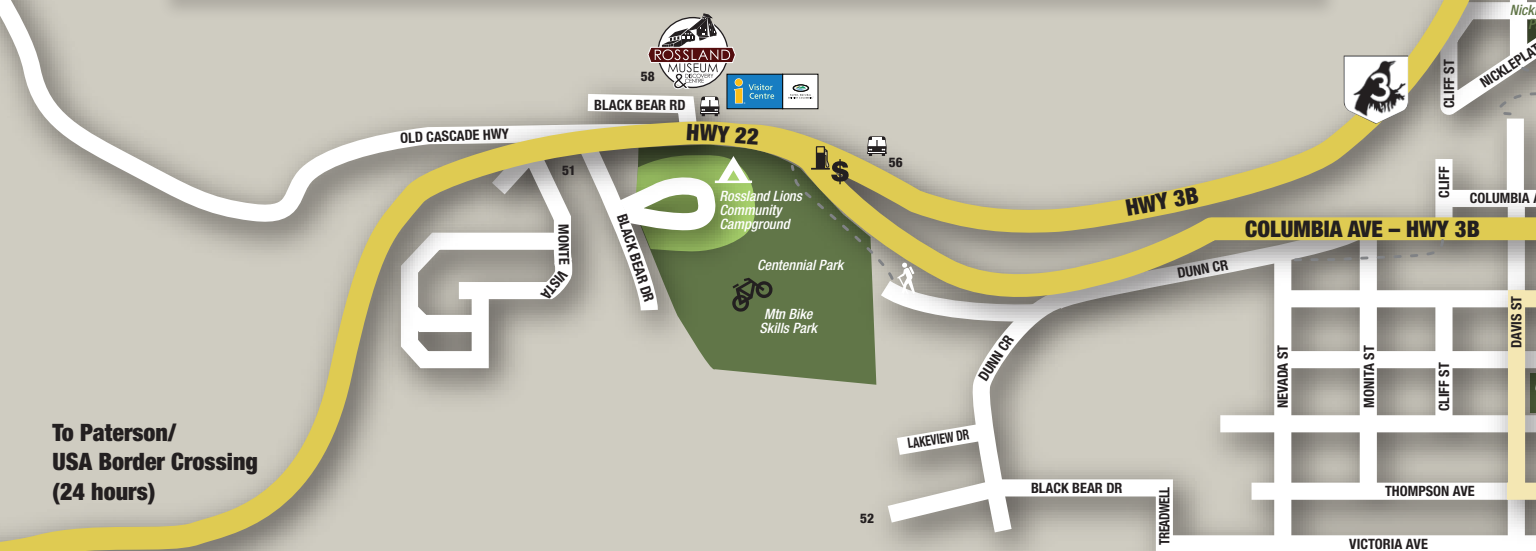
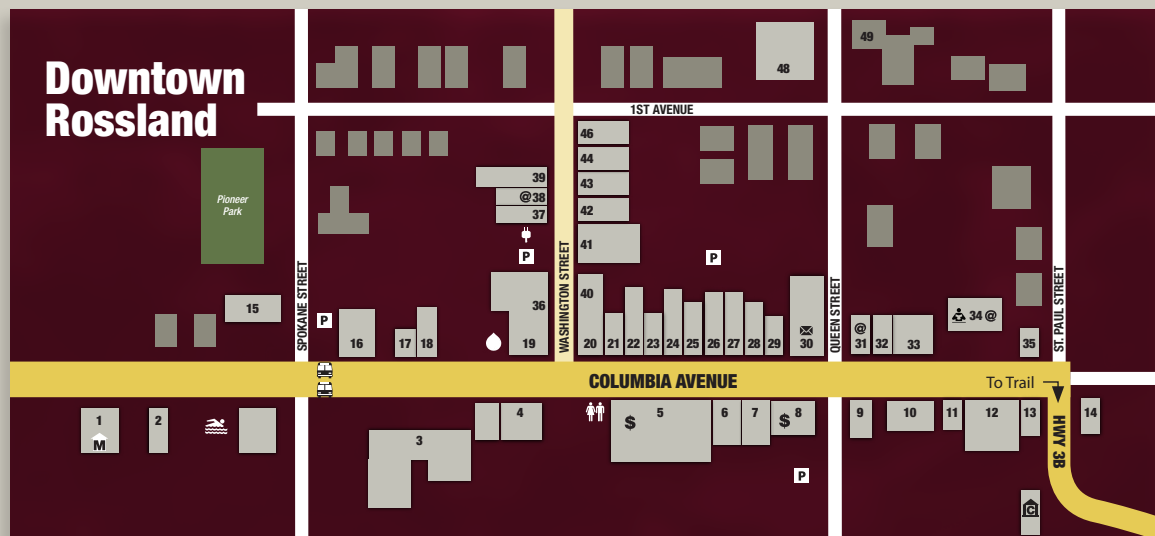
Gabriella's Restaurant and **Uptown Lounge** are celebrated for offering the best food in town, and our cozy fireplace and hot tub will keep you warm and comfy after a day on the slopes.



prestigehotelsandresorts.com ♦ 1-250-362-7375

Kelowna ♦ Vernon ♦ Salmon Arm ♦ Kamloops ♦ Golden ♦ Radium ♦ Cranbrook
Rossland ♦ Nelson ♦ Sooke ♦ Smithers ♦ Prince George ♦ Prince Rupert

Rossland Map



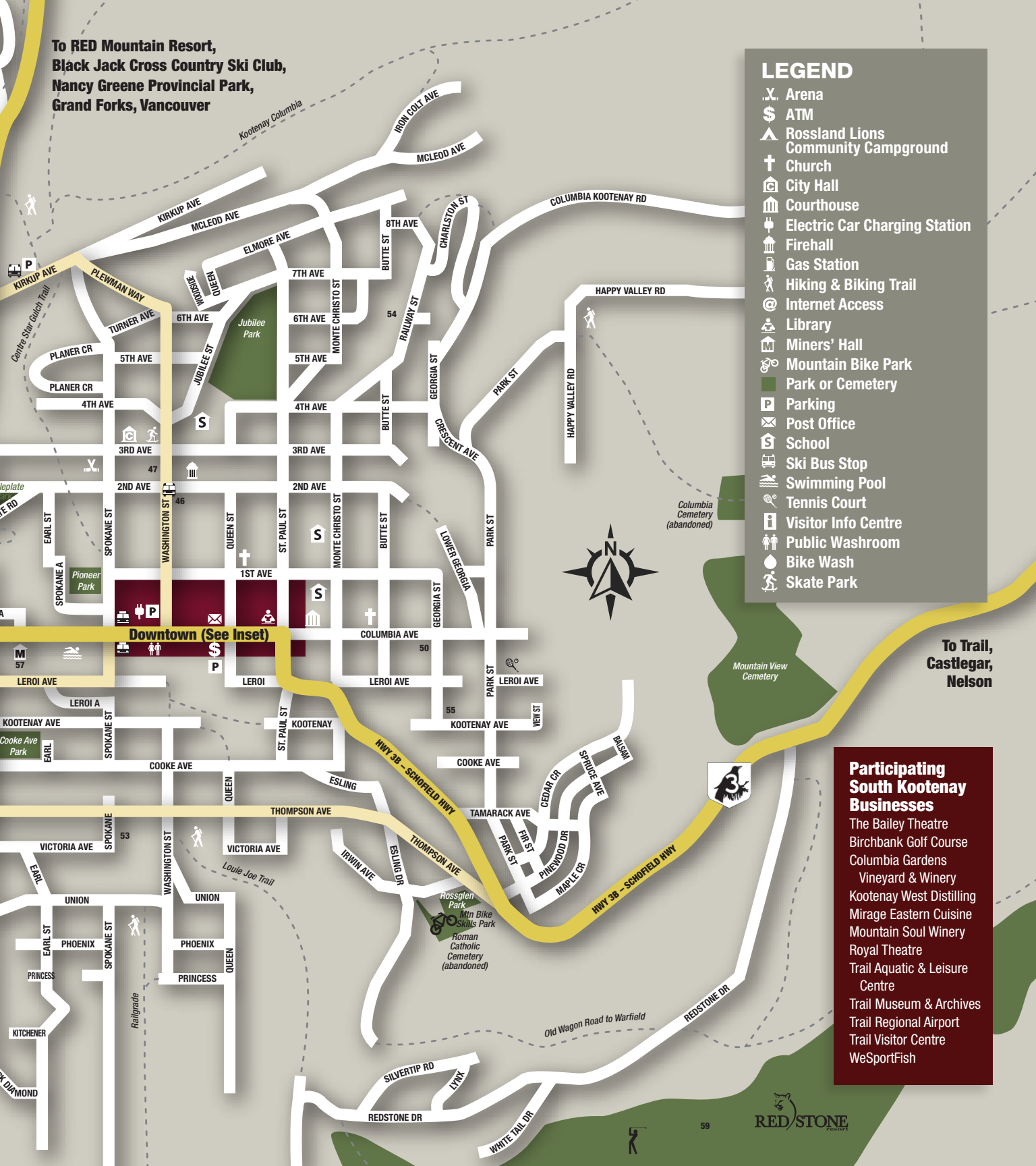
Participating Downtown Rossland Businesses

- | | | |
|---|---|--|
| 3 Prestige Mountain Resort | 19 Revolution Cycles | 43 Stephanie Gauvin Art Gallery |
| 3 Gabriella's Restaurants | 24 Rossland Outdoor | 46 The Flying Steamshovel Inn & Gastropub |
| 4 FAIR Realty | 26 Seven Summits Coffee Company | 50 Infinity Physio |
| 5 Ferraro Foods | 28 Bear Country Kitchen | 51 Lonestar Motel |
| 10 Jeffrey's Cannabis Shop | 29 Bombshack | 52 Red Barn Lodge |
| 10 Mountain Shadow Hostel | 31 Alpine Grind Coffee House & Eatery | 53 Angela's B&B and Guest House |
| 16 Mountain Nugget Chocolate Company | 31 Red Pair Shoe Store | 54 KC Loft |
| 18 Laundry Dog Laundromat | 33 Rooted Table Collective | 55 The Wild Turkey Inn |
| 19 Curiosity | 38 Gold Rush Bookstore/Fool's Gold | 56 SureStay Hotel by Best Western |
| 19 Rossland Beer Company | 40 Mountain Town Properties | 57 Gold Fever Follies (Miners Hall) |
| | 41 Achillea & Co./Kootenay Counselling | 58 Rossland Museum |
| | 41 The Natural Path Clinic | 59 Redstone Resort |

To RED Mountain Resort,
Black Jack Cross Country Ski Club,
Nancy Greene Provincial Park,
Grand Forks, Vancouver

LEGEND

- .X. Arena
- \$ ATM
- ▲ Rossland Lions Community Campground
- † Church
- 🏛 City Hall
- 🏛 Courthouse
- 🔌 Electric Car Charging Station
- 🚒 Firehall
- ⛽ Gas Station
- 🚶 Hiking & Biking Trail
- 📶 Internet Access
- 📖 Library
- 🏠 Miners' Hall
- 🚲 Mountain Bike Park
- 🌳 Park or Cemetery
- P Parking
- ✉ Post Office
- 🎓 School
- 🚌 Ski Bus Stop
- 🏊 Swimming Pool
- 🎾 Tennis Court
- ℹ Visitor Info Centre
- 🚻 Public Washroom
- 🚰 Bike Wash
- 🛼 Skate Park

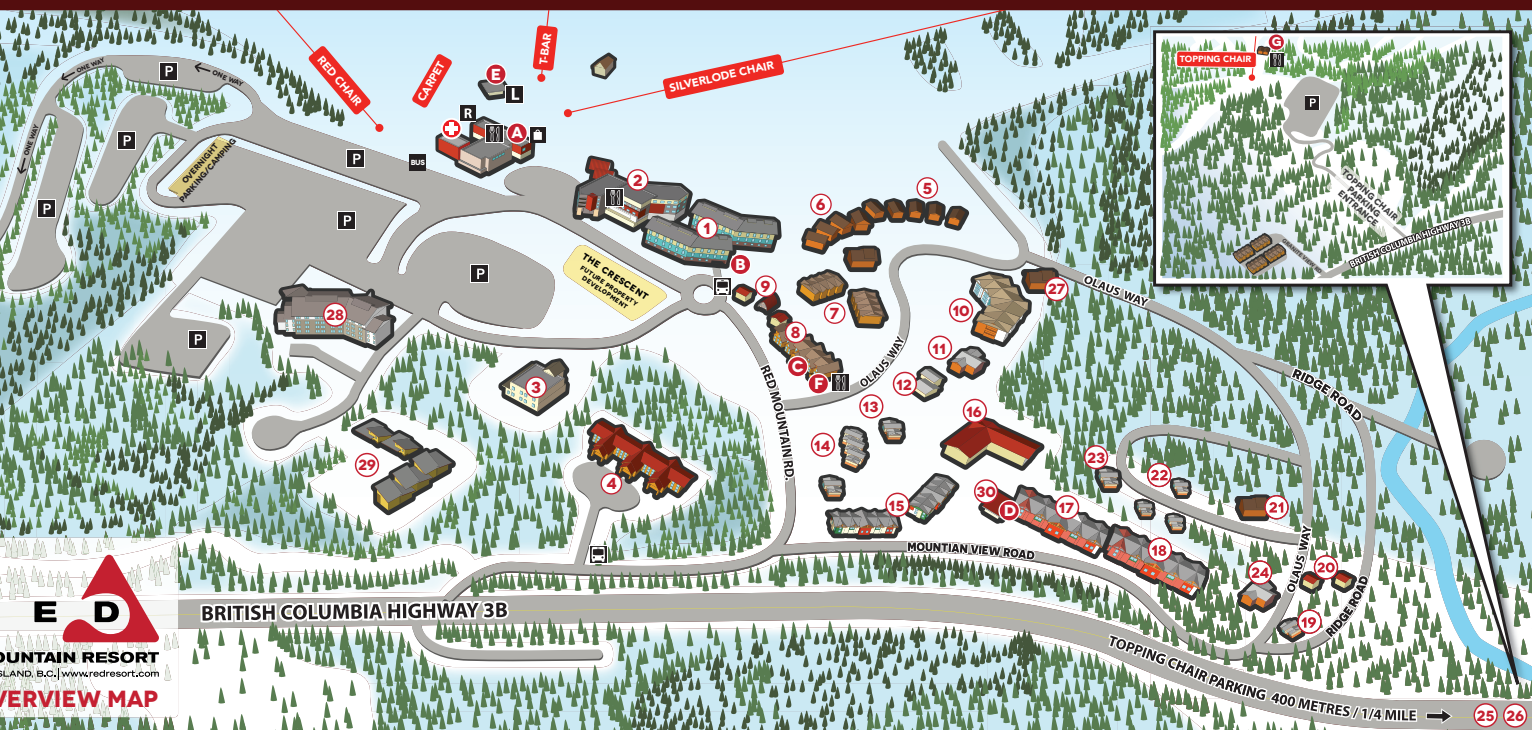


Downtown (See Inset)

Participating South Kootenay Businesses

The Bailey Theatre
Birchbank Golf Course
Columbia Gardens
Vineyard & Winery
Kootenay West Distilling
Mirage Eastern Cuisine
Mountain Soul Winery
Royal Theatre
Trail Aquatic & Leisure Centre
Trail Museum & Archives
Trail Regional Airport
Trail Visitor Centre
WeSportFish

Red Resort Base Area



E D
RED MOUNTAIN RESORT
 ROSSLAND, B.C. | www.redresort.com
OVERVIEW MAP

MAP KEY

- | | | | |
|--------------------|--------------|-----------|---------|
| DINING | R RENTALS | L LESSONS | SHUTTLE |
| FIRST AID/DISPATCH | BUS BUS STOP | P PARKING | RETAIL |

RED
MOUNTAIN RESORT
 ROSSLAND, B.C. | www.redresort.com

WELCOME CENTRES

- (A)** RED Mountain Resort Base Lodge
 Rafter's
 Sourdough Alley
 Keen Coffee
 Piste Off Retail
 Red Sport Rentals **R**
 First Aid / Dispatch **+**
- (B)** Red Mtn Resort Lodging Check-In
- (C)** Big Red Cats
- (D)** Red Mountain Village Check-in
- (E)** Fall Line Ski & Snowboard School **L**
- (F)** Donnie's Bistro
- (G)** Flyin' Phil's Hangout
 Taco Rojo

ACCOMMODATIONS

- (1)** Slalom Creek Condos
- (2)** The Josie Hotel
- (3)** Nowhere Special Hostel
- (4)** Ram's Head Inn
- (5)** Grey Wolf Cabins
- (6)** White Wolf Cabins
- (7)** Copper Chalets
- (8)** Red Rob's
- (9)** Red Shutter Inn
- (10)** Silvertip Lodge
- (11)** The Lofts at Red
- (12)** Big Red House
- (13)** Olafus House
- (14)** Carolyn's Corner
- (15)** Granite Mountain Chalets
- (16)** Cascade Lodge
- (17)** Powderview Lodge
- (18)** Red Mountain Village Redstone Chalets
- (19)** Red Mountain Village Bear House
- (20)** Red Mountain Village A-Frame
- (21)** Red Mountain Village Moose Lodge
- (22)** Red Mountain Village Cabins
- (23)** Red Mountain Village Log House
- (24)** Red Mountain Village Eagle's Nest
- (25)** Aladar's Guest House
- (26)** 88 Creekside
- (27)** Red Mountain Village Mountain Creek Inn
- (28)** Morning Star Condos
- (29)** Mountain Project Residences
- (30)** Red Mountain Village Koda Lodge

How to Get Here



Kootenay Transit




Planning that ski trip to Red Mountain? Need transportation for your wedding guest? Kootenay Transit provides airport shuttle service from/ to Rossland. We also book as a private charter for special events in the West Kootenay. Book online or contact us directly!

kootenaytransit.ca
kootenaytransit@gmail.com
 250.231.9959  



Trail Regional Airport

Convenient, reliable and affordable. Close to world-class skiing, mountain biking, golfing and outdoor adventure, YZZ services the entire region with flights daily to Vancouver YVR. Flight info and booking at 1-800-663-2872. View YZZ's webcam and airport info at trailairport.ca

9019 Hwy. 22A, Trail
 250.367.0029   



Kootenay Charters

Your locally owned passenger transportation experts ensuring you arrive safely at your destination. From eight passengers to 58 passengers, we have a bus to fit you and your group. Take us along on your next escapade. Providing winter service to Red Mountain and Spokane airport.

kootenaycharters.com
info@kootenaycharters.com
 250.365.2871  



Neighbours

SOUTH KOOTENAY



The Charles Bailey
Theatre in Trail

EXPLORE THE SOUTH KOOTENAY

Golfing at
Birchbank
Golf Course.

THE SOUTH KOOTENAY AREA IS arranged in such a way that local communities aren't rivals, they're terrific neighbours. From sharing infrastructure to planning for the future, **Rossland, Warfield, Trail, Montrose and Fruitvale** are friendly, hospitable regional partners who work together to achieve area goals for all of their residents.

Visitors, too, benefit from the shared resources whether they come in the form of trails, playing fields, health services or spectator events. A Trail **Smoke Eaters hockey game** is a must-see in season, as is Trail's summertime weekly market.

Further afield, **Castlegar** is a regional transportation hub, while **Nelson** is an arts-oriented community on Kootenay Lake. Head north to **Ainsworth Hot Springs** and **Kaslo**, where a great driving loop to **New Denver** and the ghost town of **Sandon** will bring guests south through the legendary **Slocan Valley**. **Christina Lake** is a great destination in summer, and the budding agritourism scene in **Grand Forks** is growing.

Both Trail and Castlegar operate **airports** that can accommodate interprovincial flights, while

Spokane, Washington, is the closest large airport to Rossland. Shuttle services and rental cars are available at, or close to, all three airports.

WARFIELD

Bordering the City of Trail to the east and the City of Rossland to the west, the Village of Warfield is a small family focused community with a population of approximately 1700 residents. Warfield is encompassed by the Selkirk and Monashee Mountains and is home to an outdoor pool, community parks, community hall event space and more.

TRAIL

The mighty Columbia river running through Trail could tell some stories, sonny boy... The river is the heart of this city that offers innovative industry and lifestyle including incredible award-winning floral displays, an aquatic centre, a water park, a regional hospital, Trail Regional Airport and more.

MONTROSE

The village on Montrose lies seven kilometres east of the city of Trail along Highway 3B. Montrose is also the location of the Antenna Trail, which is managed by the Kootenay Columbia

Trails Society, a four-kilometre loop hiking trail that rises 250 metres above the village and has views of the Beaver and Columbia Valleys.

FRUITVALE

Fruitvale was originally named Beaver Siding in 1893 as a railway stop for the Nelson and Fort Sheppard Railway. In 1906, Fruitvale Limited purchased a great deal of land on both sides of this stop and changed the name to Fruitvale in a bid to attract settlement in the area.

AREA A

Area A includes the rural areas bordered on the west by the Columbia River, on the south by the Canada / U.S. Border, on the north by Champion Lakes Provincial Park and stretches east of the Village of Fruitvale.

AREA B/LOWER COLUMBIA-OLD GLORY

Area B/Lower Columbia-Old Glory includes the unincorporated communities of Genelle, Rivervale, Oasis, Casino, Blackjack, South Belt, Sheep Creek and Patterson. The Rossland Range Recreation site, Nancy Greene Provincial Park and the Black Jack Cross Country ski area lies in the electoral Area B and is home to about 1300 residents.



Trail Regional Airport

Convenient, reliable and affordable. Close to world-class skiing, mountain biking, golfing and outdoor adventure, YZZ services the entire region with flights daily to Vancouver YVR. Flight info and booking at 1-800-663-2872. View YZZ's webcam and airport info at trailairport.ca

9019 Hwy. 22A, Trail
250.367.0029   

 **TRAIL REGIONAL
AIRPORT**



Champion Lakes Provincial Park

TOURISM CHAMPION LAKES



Fun at the Warfield Pool

TO FLETT



Hiking the Antenna Trail above Montrose.

TO FLETT





The Bailey Theatre

The Bailey Theatre in Trail is the place for live entertainment. Enjoy everything from music, theatre, dance, comedy, and family shows in our main theatre to intimate jazz or classical performances in our cabaret-style small space. Plus, every Thursday from mid-June to mid-August catch our Music in the Park shows at Gyro Park, Trail. For a full list of indoor, outdoor, and touring shows visit our website.

trail-arts.com

info@trail-arts.com

1501 Cedar Ave., Trail
250.368.9669  






Royal Theatre

Escape With Us! The Royal Theatre is a first run luxury cinema located in Downtown Trail. VIP Recliners, Laser Projection, 50' Screen, 7.1 Dolby Digital Surround Sound – and always real butter on the popcorn. Book your tickets online and experience movies how they were meant to be seen.

royaltheatretail.com

1597 Bay Ave., Trail

Office 250.231.5672   



Trail Aquatic and Leisure Centre

Trail Aquatic and Leisure Centre — something for everybody! Waterslide, 8-lane 25m pool, leisure pool, hot tub, diving boards, steam room, wheelchair accessible, fitness centre and meeting rooms. Birthday party packages available. Visit trailrecreation.ca for current programs, services, and hours of operations.

trailrecreation.ca

1875 Columbia Ave., Trail
250.364.0888  



Birchbank Golf Course

Birchbank boasts the longest season in the West Kootenay. A tree-lined classic championship-style course that is fully matured and plays from a variety of tees, with the largest turf-driving range and practice facility.

birchbankgolf.com
proshop@birchbankgolf.com
#5500 Hwy. 22A, Genelle
250.693.2255   

BIRCHBANK
Golf Club



Columbia Gardens Vineyard & Winery

Experience the essence of the South Kootenay at Columbia Gardens Vineyard and Winery. Discover award-winning wines, a charming tasting room, gift shop, picturesque wedding venue, and a cozy guest house.

cgwinery.com
info@cgwinery.com
9340 Station Road, Trail
250.367.7493 



Kootenay West Distilling

Kootenay West Distilling is a grain-to-grass distillery in the heart of the Kootenays. We offer a 50-seat lounge to our patrons, with unique cocktails and simple local nibbles.

kootenaywestdistilling.com
management@kootenaywestdistilling.com
1180 Cedar Ave., Trail
250.368.3751 

KOOTENAY WEST
— DISTILLING

The Mirage Eastern Cuisine

Only five minutes to Red Mountain Resort, The Mirage Eastern Cuisine is a modern, take-out restaurant nestled in Warfield, B.C. Chef Jay has been specializing in sourcing local, seasonal products for over 12 years and opened the doors of Mirage in June, 2023.

miragecuisine.ca
miragecuisine@gmail.com
870 D Schofield Hwy. 3, Warfield
250.921.6847  



Mountain Soul Vineyard and Winery

Mountain Soul Wines and Event Venue offers wine tastings and charcuterie pairings between noon and 5:00 on Fridays through Sundays. Our beautiful mountainside venue is also available for corporate events, weddings or special occasions.

**392 Columbia Gardens Road,
Trail**
250-512-7770  



WeSportFish.com

Experience one of North America's finest fisheries right here on the Columbia River. Thousands of wild rainbow trout are waiting to hit your fly! Discover world class sport fishing, where to fish and how. *WeSportFish.com*

Presented by:
**Community Futures
South Kootenay**
CommunityFutures.com



Trail Museum & Archives

Explore the industrious roots of Trail while immersing in its rich sports heritage! Located in the Trail Riverfront Centre. Free Admission | Gift Shop | Wi-Fi | RV Parking | Tours Available

trailmuseum.ca
museum@trail.ca
1505 Bay Ave., Trail
250.364.0821  



Trail Visitor Centre

Located in the Trail Riverfront Centre, Visitor Centre staff welcome you to Trail! We are pleased to assist you during your stay. Gift Shop | RV Parking | Wi-Fi | Charging Station | Information Kiosk

tourismtrailbc.ca
tourism@trail.ca
1505 Bay Ave., Trail
250.364.0821  



NOW GET UP HERE!

IN CLOSING, ROSSLAND HAS shifted from being a molten mountain of gold and granite into a bustling boomtown founded on the backs of hard-working, hard-playing folks whose commitment to life in the **outdoors**, **arts** and **culture** are only surpassed by their commitments to one another.

Rossland is an honest-to-goodness real community where people look out for one another, where we look after our dogs, cats, and children, where the bears have rights and

our respect, where traffic jams are replaced by huckleberry jams, and our senior citizens are as cherished as our junior residents.

Rossland is not only a terrific place to visit, it is a great place to call home for however long or short your stay. We want you to feel welcomed – to be our guest, yes, but to also feel a part of the community for the duration of your time here.

We won't try to pry you away from the corporate ladder or the constant rush to keep up with the Joneses, but if you've

been jonesing for a genuine, quality experience, we can't promise you won't come around to a Rossland way of thinking all on your own.

Many of us have fallen in love here, whether that be with the surroundings, the so-called vibe, or a like-minded person we've been lucky enough to find.

For our part, we hope you fall in love with our little mountain kingdom too, and that the memories you make here will serve you a lifetime.

The **2024/25 Rossland Escape Guide** is published by Tourism Rossland. tourismrossland.com

Cover photos by Ashley Voykin, Dave Heath and Ryan Flett

Words by Tyler Austin Bradley & Colin Whyte. Design by Shelley Ackerman. PRINTED IN CANADA

TOURISM
ROSSLAND

FERRARO FOODS

QUALITY AND FRESHNESS EVERY DAY

Quality and Selection

- Huge selection of **GROCERIES**
- Many **DELI** items are made in-store daily
- Over 1,500 **INTERNATIONAL FOOD** selections
- **MEAT & SEAFOOD** cut in-store daily by our butchers
- Finest quality **CHEESES** from around the world
- Fresh local and organic **PRODUCE**
- Fresh **BAKED GOODS** from our bakery in Trail
- Grab-n-Go **FLORAL** selections
- **STARBUCKS**® kiosk in our Downtown Trail location

FRIENDLY SERVICE
HUGE SELECTION
FINEST QUALITY



TWO LOCATIONS ready to serve you!
ROSSLAND • 2029 Columbia Ave • **250-362-5206**
Downtown TRAIL • 850 Farwell St • **250-368-5558**



ferrarofoods.ca
facebook.com/ferrarofoods
instagram.com/myferrarofoods

THE *Josie*

AUTOGRAPH COLLECTION®
HOTELS



YOUR LUXURIOUS HOME BASE FOR YEAR-ROUND ADVENTURE

Stay in style at The Josie and dine on regionally-inspired cuisine at The Velvet Restaurant & Lounge.

4306 RED MOUNTAIN RD, ROSSLAND, BC V0G 1Y0 | 250.362.5155

THE velvet
RESTAURANT & LOUNGE