

- Red Mountain**
- 14 Lower Mxltip Xewilh (Cedar)
  - 22 Top Up
  - 26 Pilgrim (Lower)
  - 29 Centennial Trail
  - 33 Moe's
  - 36 Drifter
  - 20 Gold Digger
  - 21 Top Down
  - 24 Dragon Tail (Lower)
  - 25 Pilgrim (Upper)
  - 27 Boneyard
  - 30 Redtop
  - 32 Blue Elephant
  - 34 Larry's
  - 35 Miners
  - 23 Dragon Tail (Upper)
  - 28 Paydirt
  - 31 Redhead
  - 7 Mt Roberts

- LEGEND**
- Beginner
  - Intermediate
  - Advanced
  - Expert
  - Hiking Trail
  - Skills Park
  - Parking
  - Highway



- Rossland**
- 61 Eddie J (Lower)
  - 80 Railgrade
  - 82 Louie Joe
  - 83 Rubberhead
  - 53 Stardust
  - 54 Techno Grind
  - 56 Milky Way (Upper)
  - 57 Milky Way (Lower)
  - 60 Eddie J (Upper)
  - 62 North Star
  - 63 Kootenay Columbia
  - 65 Southern Cross
  - 66 Iron Colt
  - 67 Centre Star Gulch
  - 68 Green Door
  - 69 Roger's
  - 71 Cemetery
  - 72 Happy Valley
  - 81 Switchback
  - 84 Drake's
  - 85 Deer Park
  - 50 Coffee Run
  - 51 Full Monte
  - 52 Ziggy's
  - 55 Techno Grind Plus
  - 59 Snake
  - 64 KC Ridge
  - 70 Spring Cleaning
  - 58 Yellow Submarine

**WARFIELD**

**ROSSLAND**

**SELKIRK  
MOUNTAIN  
FOREST LTD**

km  
mi





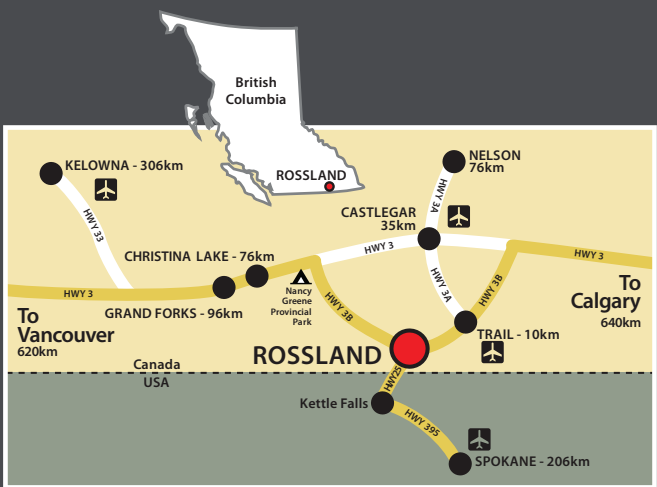


# TRAILS OF THE ROSSLAND RANGE 2023

## THANK YOU!

A big thank you to local landowners! Over 90% of the trails in the KCTS trail network are located on private property. Local landowners have generously agreed to allow public access to these trails, making our enjoyment of them possible. Please respect people's private property by staying on marked trails and obeying signage.

Join the Kootenay Columbia Trails Society and help support our trails. \$10/yr for individuals or \$20/yr for families. [www.kcts.ca](http://www.kcts.ca)

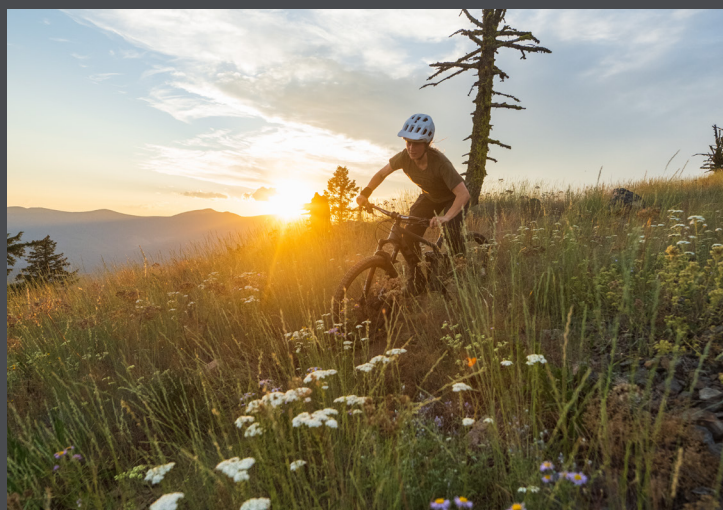


### Driving times to Rossland:

- Spokane, Washington - 2.5 hours
- Kelowna, British Columbia - 3.5 hours
- Vancouver, British Columbia - 7 hours
- Calgary, Alberta - 7 hours

f t i /rosslander

TOURISM  
ROSSLAND



## KCTS Trails Etiquette

Motorized use is prohibited. Class 1 E-Bikes are permitted on most, but not all trails.

Share the trails, slow down and communicate when passing. Use your voice to warn equestrians, not bells or horns.

Respect the land, landowners, and wildlife, leaving no trace.

Be responsible, these trails are unsupervised and are to be used at your own risk.

Cyclists are responsible for keeping their bike under control and at a safe speed at all times.

When encountering other users on a trail it is recommended that cyclists yield to all other users, and foot traffic yield to equestrians.

Downhill traffic should yield to uphill traffic.

When in doubt, give the other user the right of way.

### Equestrian Safety Notes:

When a horse approaches, move off the trail as far as possible. It is recommended to allow 2-3 meters of clearance. Ask the horse rider for instructions. A group should step off to the same side, lower side preferred.

### For rentals and/or information:

Gerick Cycle & Sports  
930 Rossland Ave, Trail  
250.364.1661  
[gerick.ca](http://gerick.ca)

Get Lost Adventure Centre  
4300 Red Mountain Rd, Rossland  
778.457.5001  
[redresort.com/get-lost](http://redresort.com/get-lost)

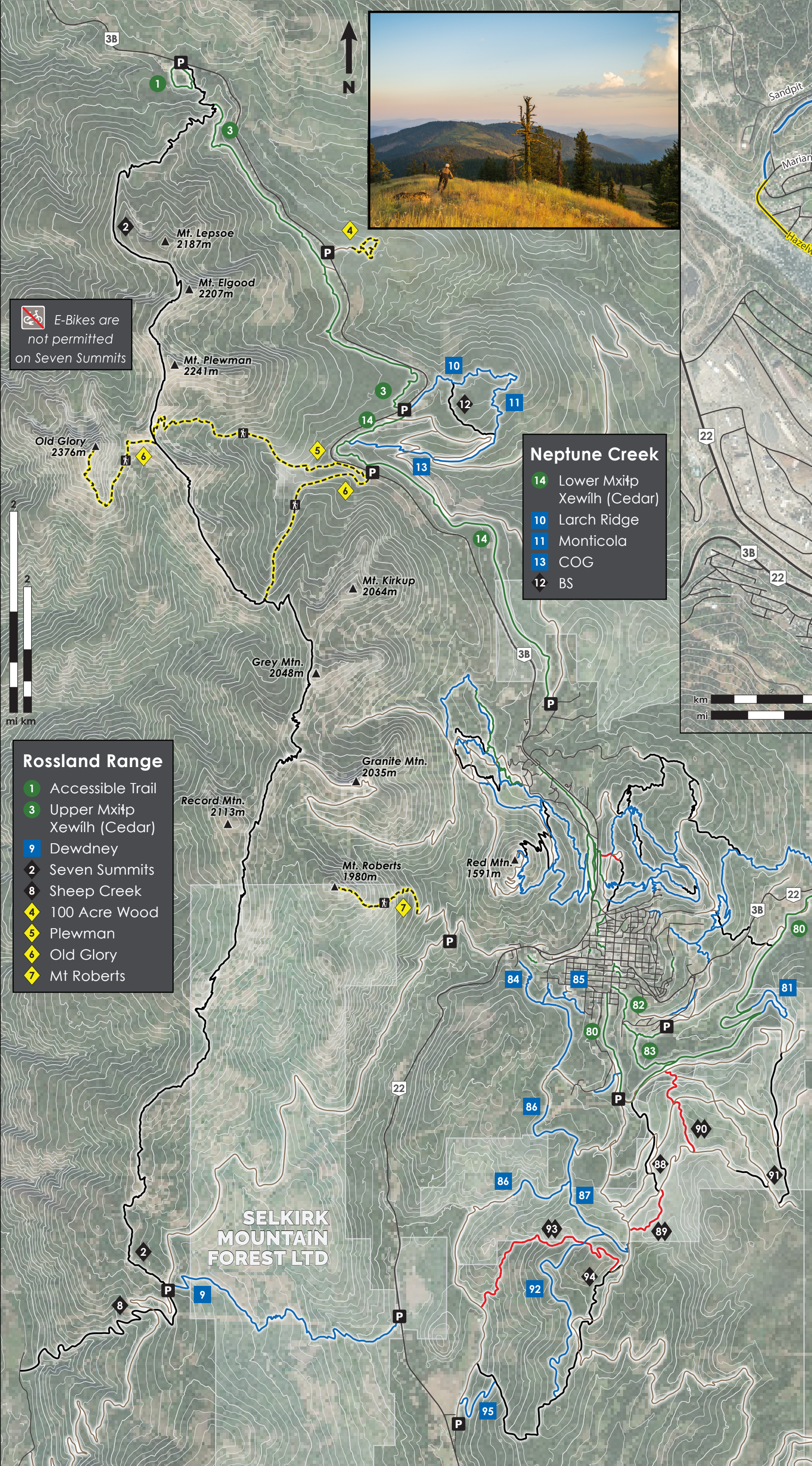
Kootenay Mtn. Biking / Kootenay Getaway  
2118 Columbia Ave, Rossland  
250.362.0080  
[kootenaymountainbiking.com](http://kootenaymountainbiking.com)

Revolution Cycles & Service  
1990 Columbia Ave, Rossland  
250.362.5688  
[revolutioncycles.ca](http://revolutioncycles.ca)

Rossland Outdoor  
2040 Columbia Ave, Rossland  
778.457.1234  
[rosslandoutdoor.com](http://rosslandoutdoor.com)

### Directions to Malde Creek parking:

- From downtown Rossland:
- Turn south on Spokane St.
  - Follow the road downhill turn left on Davis
  - One block past the 4 way STOP turn left on Victoria
  - Go down the hill, stay right at the intersection and go up the hill staying to the left
  - Turn right on Spokane & follow this road out of town
  - After all the houses take the left at the fork in the road on Gelesz Rd
  - Parking is at the bottom by the gate

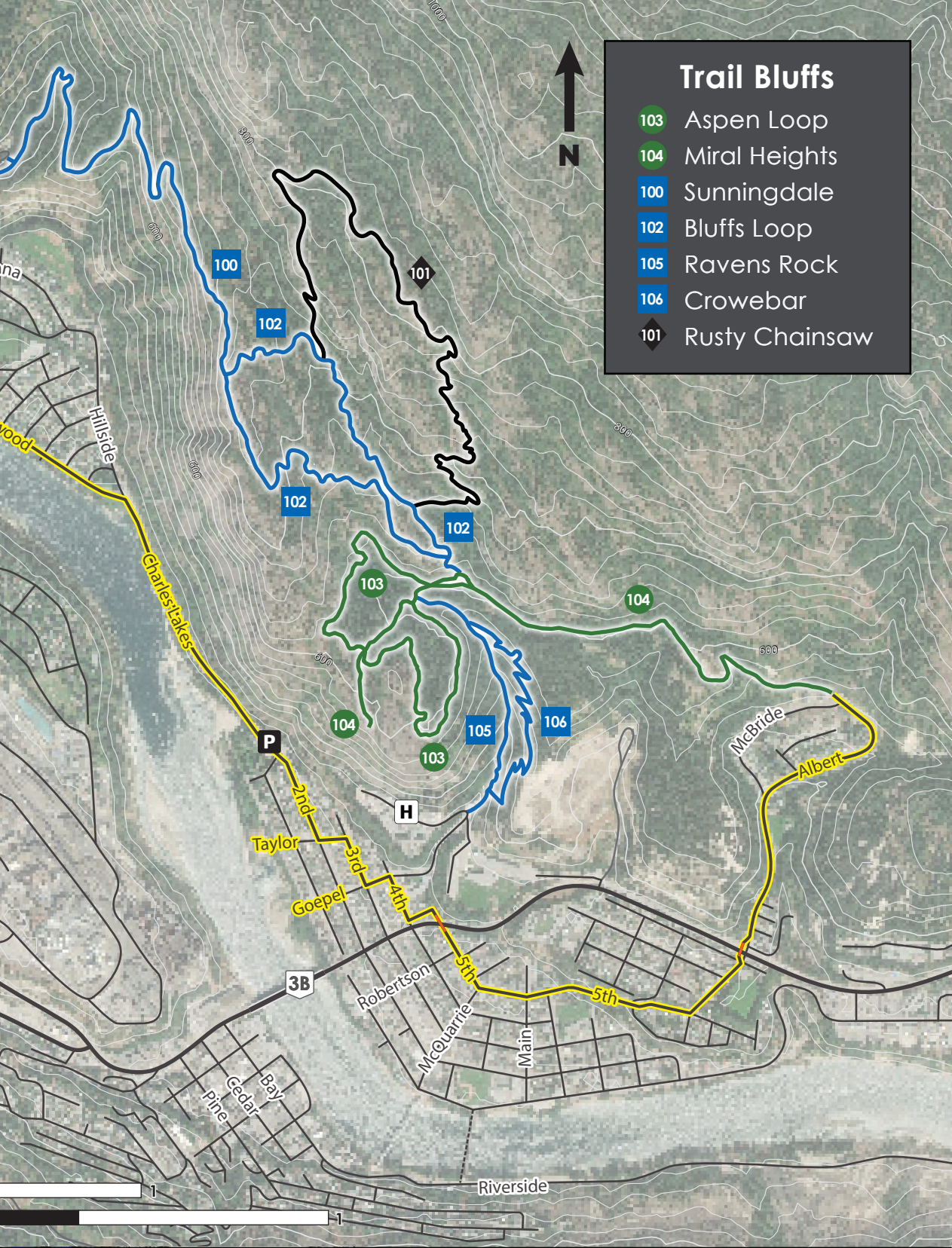


### Rossland Range

- 1 Accessible Trail
- 3 Upper Mxitp Xewilth (Cedar)
- 9 Dewdney
- 2 Seven Summits
- 8 Sheep Creek
- 4 100 Acre Wood
- 5 Plewman
- 6 Old Glory
- 7 Mt Roberts

### Neptune Creek

- 14 Lower Mxitp Xewilth (Cedar)
- 10 Larch Ridge
- 11 Monticola
- 13 COG
- 12 BS



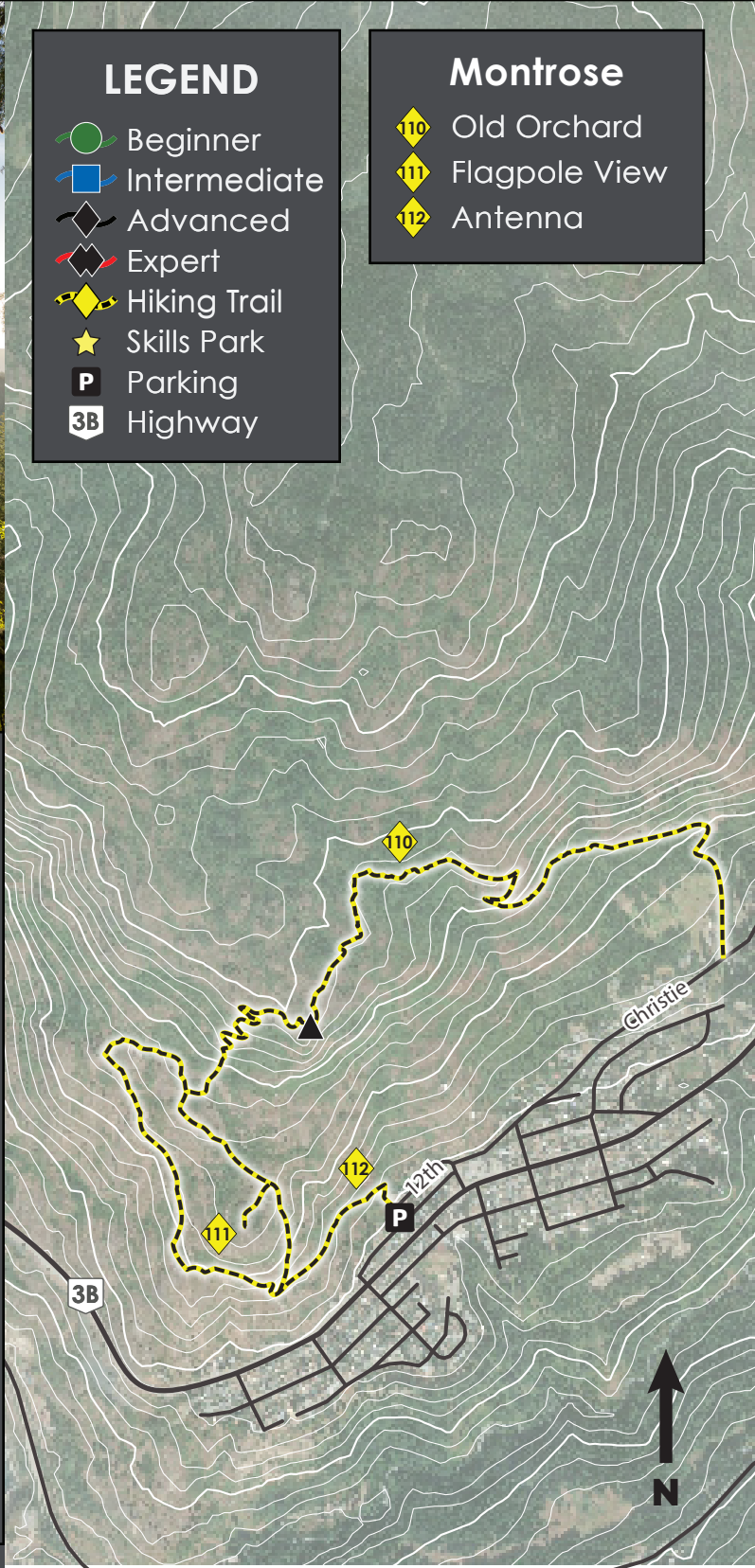
### Trail Bluffs

- 103 Aspen Loop
- 104 Miral Heights
- 100 Sunningdale
- 102 Bluffs Loop
- 105 Ravens Rock
- 106 Crowebar
- 101 Rusty Chainsaw



### Malde Creek

- 80 Railgrade
- 82 Louie Joe
- 83 Rubberhead
- 81 Switchback
- 84 Drake's
- 85 Deer Park
- 86 Doukhobor Draw
- 87 Tamarack
- 92 Colonel Angus
- 95 Awesome
- 88 Whiskey
- 91 Crown Point
- 94 SMD
- 89 Whiskey on the Rocks
- 90 Cherry Poppins
- 93 Flume



### LEGEND

- Beginner
- Intermediate
- ◆ Advanced
- ◆ Expert
- ◆ Hiking Trail
- ★ Skills Park
- P Parking
- 3B Highway

### Montrose

- 110 Old Orchard
- 111 Flagpole View
- 112 Antenna