

- Red Mountain**
- 14 Lower Mxitp Xewilh (Cedar)
  - 22 Top Up
  - 26 Pilgrim (Lower)
  - 29 Centennial Trail
  - 33 Moe's
  - 36 Drifter
  - 20 Gold Digger
  - 21 Top Down
  - 24 Dragon Tail (Lower)
  - 25 Pilgrim (Upper)
  - 27 Boneyard
  - 30 Redtop
  - 32 Blue Elephant
  - 34 Larry's
  - 35 Miners
  - 23 Dragon Tail (Upper)
  - 28 Paydirt
  - 31 Redhead
  - 7 Mt Roberts

**LEGEND**

- Beginner
- Intermediate
- Advanced
- Expert
- Hiking Trail
- Skills Park
- Parking
- Highway

- Rossland**
- 61 Eddie J (Lower)
  - 80 Railgrade
  - 82 Louie Joe
  - 83 Rubberhead
  - 53 Stardust
  - 54 Techno Grind
  - 56 Milky Way (Upper)
  - 57 Milky Way (Lower)
  - 60 Eddie J (Upper)
  - 62 North Star
  - 63 Kootenay Columbia
  - 65 Southern Cross
  - 66 Iron Colt
  - 67 Centre Star Gulch
  - 68 Green Door
  - 69 Roger's
  - 71 Cemetery
  - 72 Happy Valley
  - 81 Switchback
  - 84 Drake's
  - 85 Deer Park
  - 50 Coffee Run
  - 51 Full Monte
  - 52 Ziggy's
  - 55 Techno Grind Plus
  - 59 Snake
  - 64 KC Ridge
  - 70 Spring Cleaning
  - 58 Yellow Submarine

SELKIRK  
MOUNTAIN  
FOREST LTD





ROSSLAND  
British Columbia, Canada

ROSSLAND  
TRAILS OF  
& SOUTH KOOTENAY

### THANK YOU!

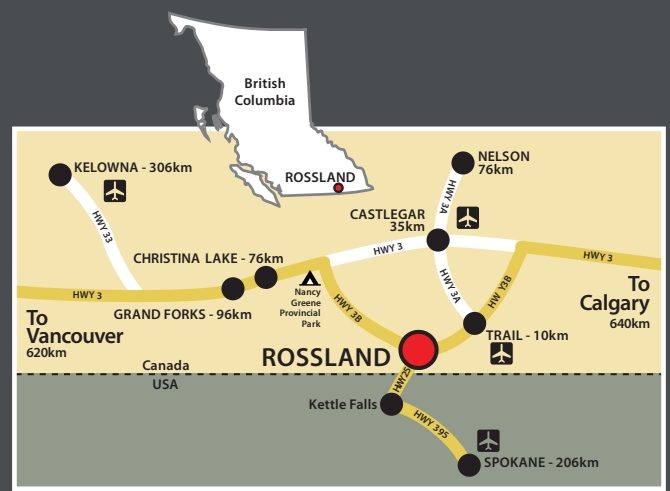
A big thank you to local landowners! Over 90% of the trails in the KCTS trail network are located on private property. Local landowners have generously agreed to allow public access to these trails, making our enjoyment of them possible. Please respect people's private property by staying on marked trails and obeying signage.

### Help support our trails

Join the Kootenay Columbia Trails Society and help support our trails.



Membership is \$10/yr for individuals or \$20/yr for families. Donations are welcomed.



f i /rosslander

TOURISM  
ROSSLAND

Graphic Design & Maps by Russell Vinegar and Morrow BioScience Ltd.  
Trail data © Trailforks and © OpenStreetMaps  
Contains information licensed under the Open Government License - Canada  
Photos by Ashley Voykin & Ryan Flett

Printed in Canada March 2024



### KCTS Trails Etiquette

Motorized use is prohibited. Class 1 E-Bikes are permitted on most, but not all trails.

Share the trails, slow down and communicate when passing. Use your voice to warn equestrians, not bells or horns.

Respect the land, landowners, and wildlife. Leave no trace.

Be responsible, these trails are unsupervised and are to be used at your own risk.

Cyclists are responsible for keeping their bike under control and at a safe speed at all times. When encountering other users on a trail it is recommended that cyclists yield to all other users, and foot traffic yield to equestrians.

Downhill traffic should yield to uphill traffic.

When in doubt, give the other user the right of way.

### Equestrian safety

When a horse approaches, move off the trail as far as possible. It is recommended to allow 2-3 meters of clearance. Ask the horse rider for instructions. A group should step off to the same side, lower side preferred.

### For rentals and information

Gerick Cycle & Sports  
930 Rossland Ave, Trail  
250.364.1661  
[gerick.ca](http://gerick.ca)

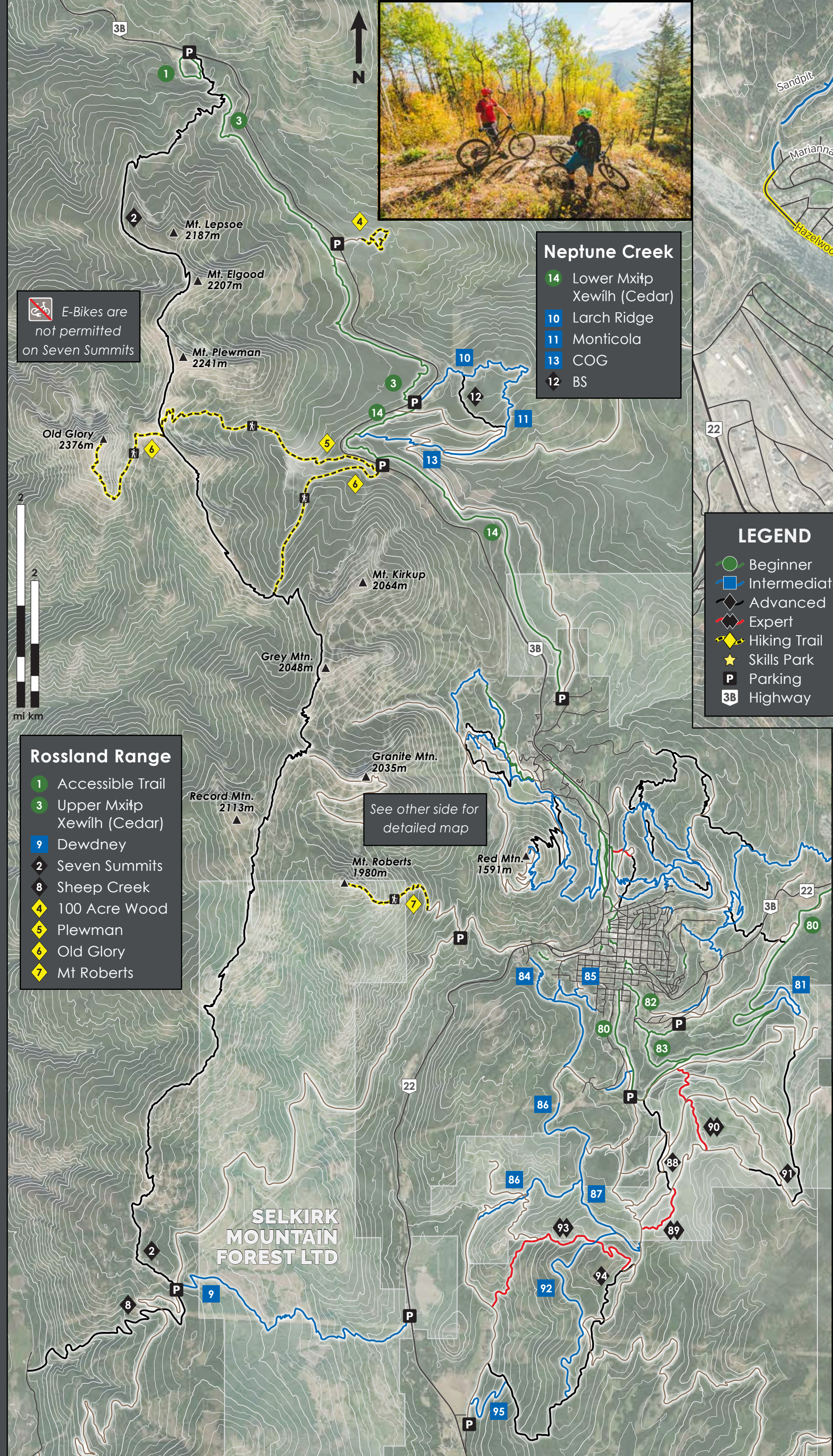
Kootenay Mountain Biking  
250.362.0080  
[kootenaymountainbiking.com](http://kootenaymountainbiking.com)

Revolution Cycles & Service  
1990 Columbia Ave, Rossland  
250.362.5688  
[revolutioncycles.ca](http://revolutioncycles.ca)

Rossland Outdoor  
2040 Columbia Ave, Rossland  
778.457.1234  
[rosslandoutdoor.com](http://rosslandoutdoor.com)

### Directions to Malde Creek parking

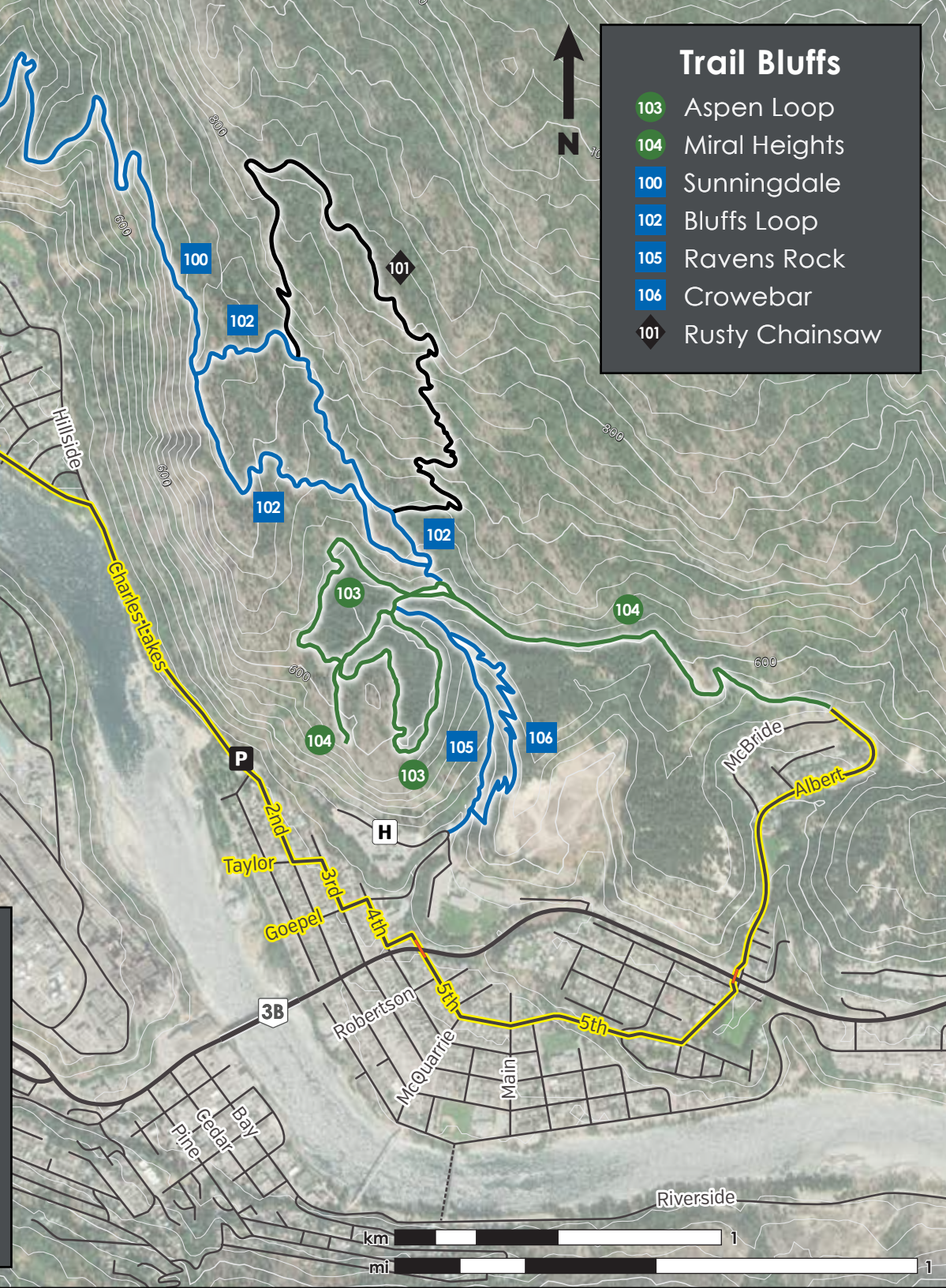
- From downtown Rossland:
- Turn south on Spokane St.
  - Follow the road downhill turn left on Davis
  - One block past the 4 way STOP turn left on Victoria
  - Go down the hill, stay right at the intersection and go up the hill staying to the left
  - Turn right on Spokane & follow this road out of town
  - After all the houses take the left at the fork in the road on Gelesz Rd
  - Parking is at the bottom by the gate



- ### Rossland Range
- 1 Accessible Trail
  - 3 Upper Mxitp Xewilth (Cedar)
  - 9 Dewdney
  - 2 Seven Summits
  - 8 Sheep Creek
  - 4 100 Acre Wood
  - 5 Plewman
  - 6 Old Glory
  - 7 Mt Roberts

- ### Neptune Creek
- 14 Lower Mxitp Xewilth (Cedar)
  - 10 Larch Ridge
  - 11 Monticola
  - 13 COG
  - 12 BS

- ### LEGEND
- Beginner
  - Intermediate
  - ◆ Advanced
  - ◆ Expert
  - ◆ Hiking Trail
  - ★ Skills Park
  - P Parking
  - 3B Highway



- ### Trail Bluffs
- 103 Aspen Loop
  - 104 Miral Heights
  - 100 Sunningdale
  - 102 Bluffs Loop
  - 105 Ravens Rock
  - 106 Crowebar
  - 101 Rusty Chainsaw

- ### Fruitvale
- 116 Webster Road
  - 117 Webster Connector
  - 118 Barclay Creek
  - 119 Upper Webster

- ### Malde Creek
- 80 Railgrade
  - 82 Louie Joe
  - 83 Rubberhead
  - 81 Switchback
  - 84 Drake's
  - 85 Deer Park
  - 86 Doukhorbor Draw
  - 87 Tamarack
  - 92 Colonel Angus
  - 95 Awesome
  - 88 Whiskey
  - 91 Crown Point
  - 94 SMD
  - 89 Whiskey on the Rocks
  - 90 Cherry Poppins
  - 93 Flume

- ### Montrose
- 110 Old Orchard
  - 111 Flagpole View
  - 112 Antenna